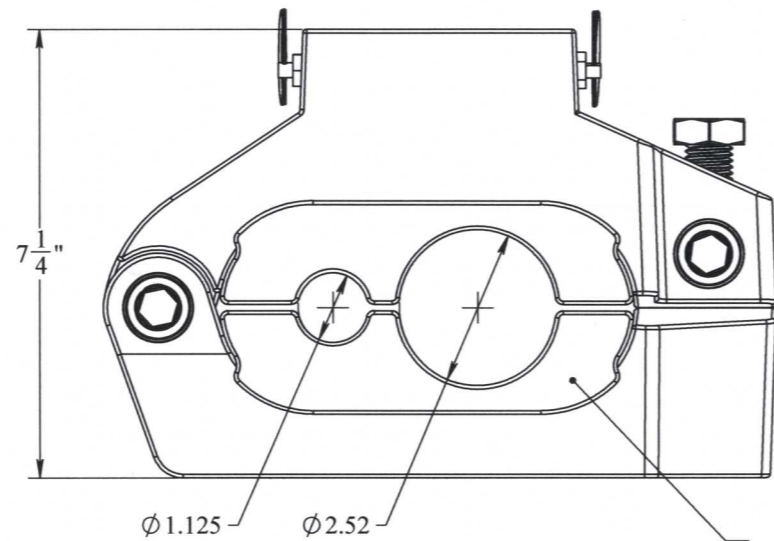
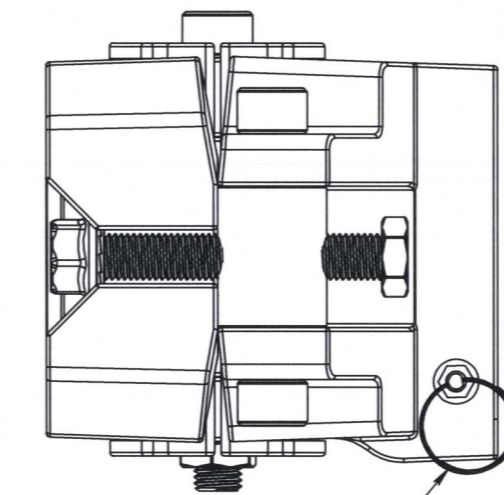
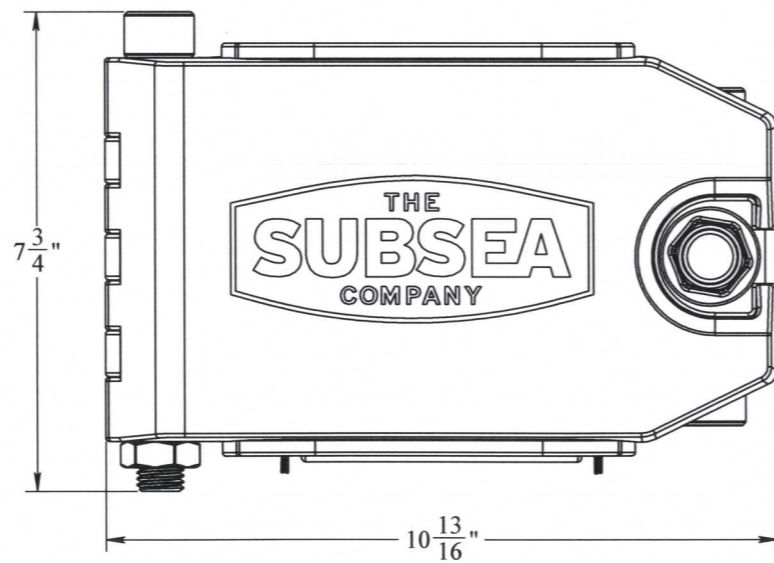


REVISIONS				
REV.	DESCRIPTION	ECO #	DATE	APPROVED
A1	RELEASE	2013-382	9/20/2013	
A2	CHANGED MUX LINE TO 1.125"	2013-386	9/27/2013	
A3	ADDED NEW BASE. ADDED LOGO TO DOOR	2013-393	10/7/2013	<i>GNB</i>



CLAMP INSERTS
ARE REVERSIBLE
FOR LEFT AND RIGHT
HAND CONFIGURATIONS



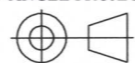
PULL SPRING PLUNGERS
TO REMOVE CLAMP
FROM CLAMP MOUNT

NOTES:

- MATERIAL OF CONSTRUCTION:
- POLYURETHANE
- REINFORCED STEEL FRAME
- HARDWARE IS NITRONIC 60 & 316 STAINLESS STEEL
- DESIGNED FOR 1.125" MUX LINE & 2.52" UMBILICAL LINE
- WEIGHT: 21 LBS.

PROPRIETARY AND CONFIDENTIAL:
THE INFORMATION CONTAINED IN THIS DRAWING IS THE SOLE PROPERTY OF THE SUBSEA COMPANY INC. ANY REPRODUCTION IN PART OR AS A WHOLE WITHOUT THE WRITTEN PERMISSION OF THE SUBSEA COMPANY INC IS PROHIBITED.

3RD ANGLE PROJECTION:



INTERPRET GEOMETRIC TOLERANCING PER: ASME Y14.5

WORKMANSHIP STANDARD PER WI 751-001

UNLESS OTHERWISE SPECIFIED: ALL DIMENSIONS ARE IN INCHES

WEIGHT: 23.93 lbs.

	NAME	DATE
DRAWN	<i>Greg</i>	10-9-13
CHECKED	<i>ML</i>	10-9-13
Q.A.	<i>C-TEZ</i>	10-9-13
MFG APPR.	<i>T. [Signature]</i>	10-10-13

SCALE: 1:8

DO NOT SCALE DRAWING



SIZE: **B** TITLE: CLAMP, MUX, 2.52" UMBILICAL LINE, 1.125" MUX LINE REV: **A3**

DWG. NO. TSC-01219-GA

SHEET 1 OF 1