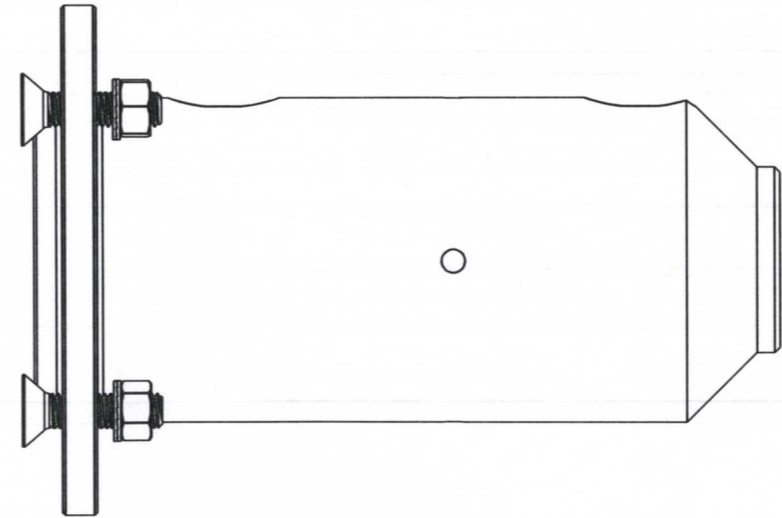
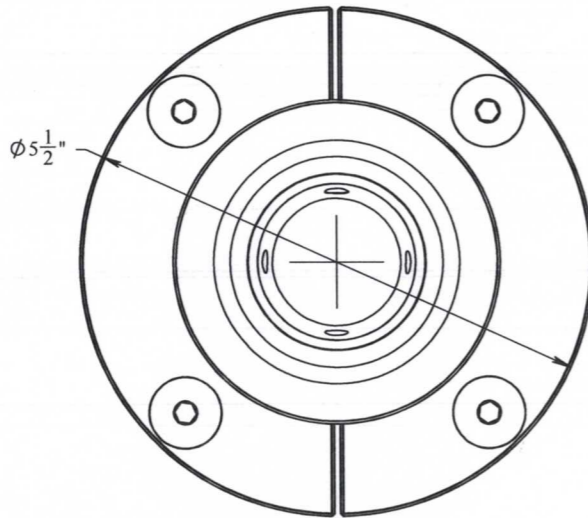
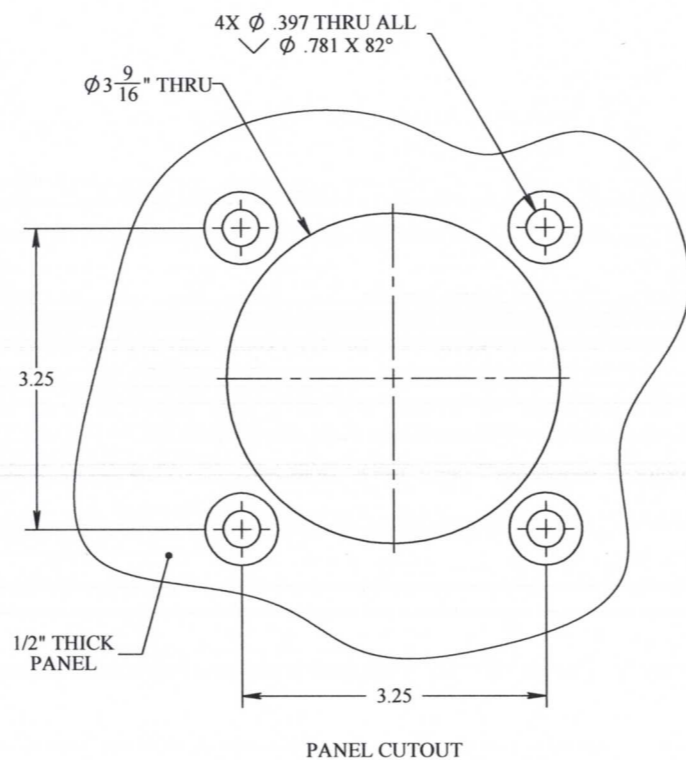
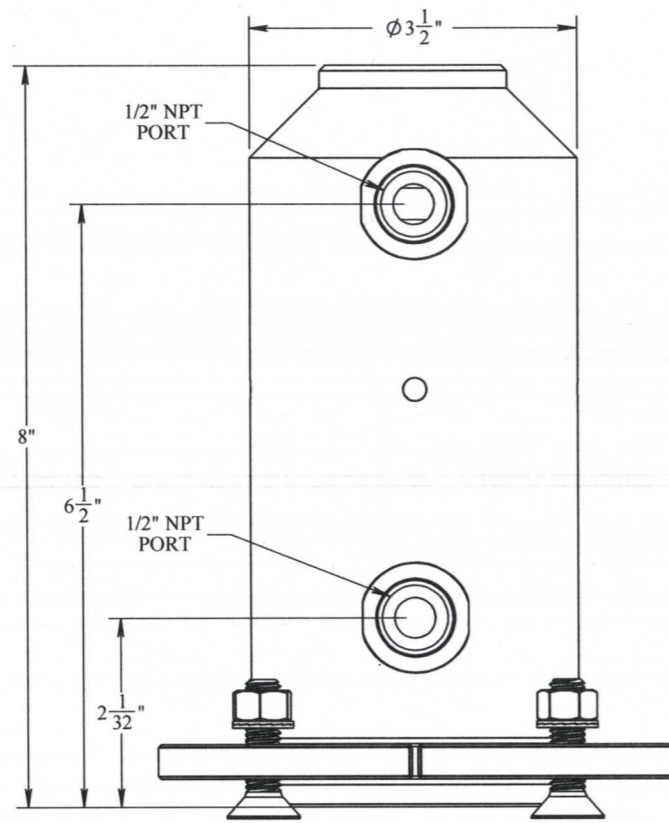


REVISIONS				
REV.	DESCRIPTION	ECO	DATE	APPROVED
A1	RELEASE	2014-213	6/15/2014	GMB

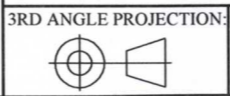


- NOTES:
- MATERIAL OF CONSTRUCTION:
 - RECEPTACLE IS NITRONIC 60
 - COLLET RING IS 316 STAINLESS STEEL
 - HARDWARE IS 316 STAINLESS STEEL
 - DESIGNED TO API 17H TYPE B STANDARDS
 - 1/2" SAE PORT RATED AT 5K PSI.
 - WEIGHT: 17.68 LBS.
 - DESIGNED FOR HIGH FLOW

PROPRIETARY AND CONFIDENTIAL:
 THE INFORMATION CONTAINED IN THIS DRAWING IS THE SOLE PROPERTY OF THE SUBSEA COMPANY INC. ANY REPRODUCTION IN PART OR AS A WHOLE WITHOUT THE WRITTEN PERMISSION OF THE SUBSEA COMPANY INC IS PROHIBITED.

WORKMANSHIP STANDARD PER WI 751-001

	NAME	DATE
DRAWN	GMB	6-16-14
CHECKED	TPM	6-16-14
Q.A.	RIP	6-16-14
MFG APPR.	TPM	6-16-14



INTERPRET GEOMETRIC TOLERANCING PER: ASME Y14.5

UNLESS OTHERWISE SPECIFIED: ALL DIMENSIONS ARE IN INCHES

SCALE: 1:1

WEIGHT: 17.68 LBS.

DO NOT SCALE DRAWING

SIZE	TITLE:	REV
B	RECEPTACLE, HIGH FLOW ASSEMBLY, FEMALE, DUAL 1/2" NPT	A1

DWG. NO. TSC-01477-GA

SHEET 1 OF 1