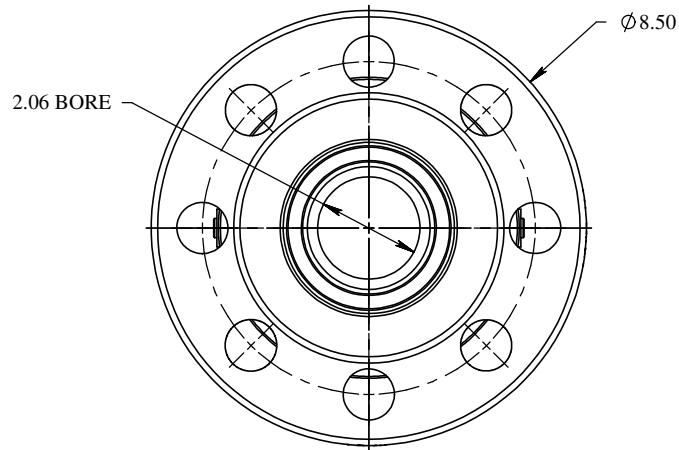


REVISIONS				
REV.	DESCRIPTION	ECO #	DATE	APPROVED
D1	DESIGN WITH FLANGES		1/13/22	

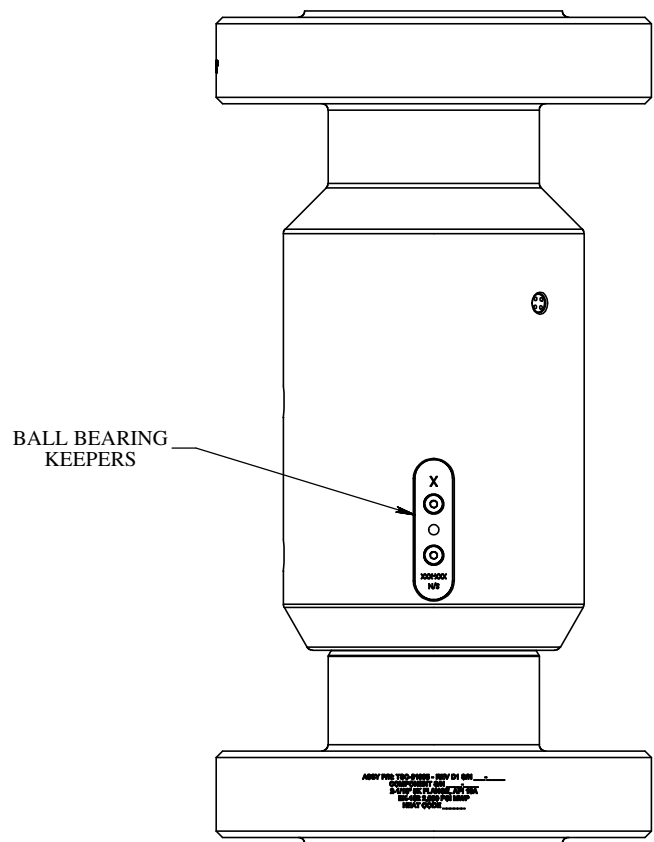
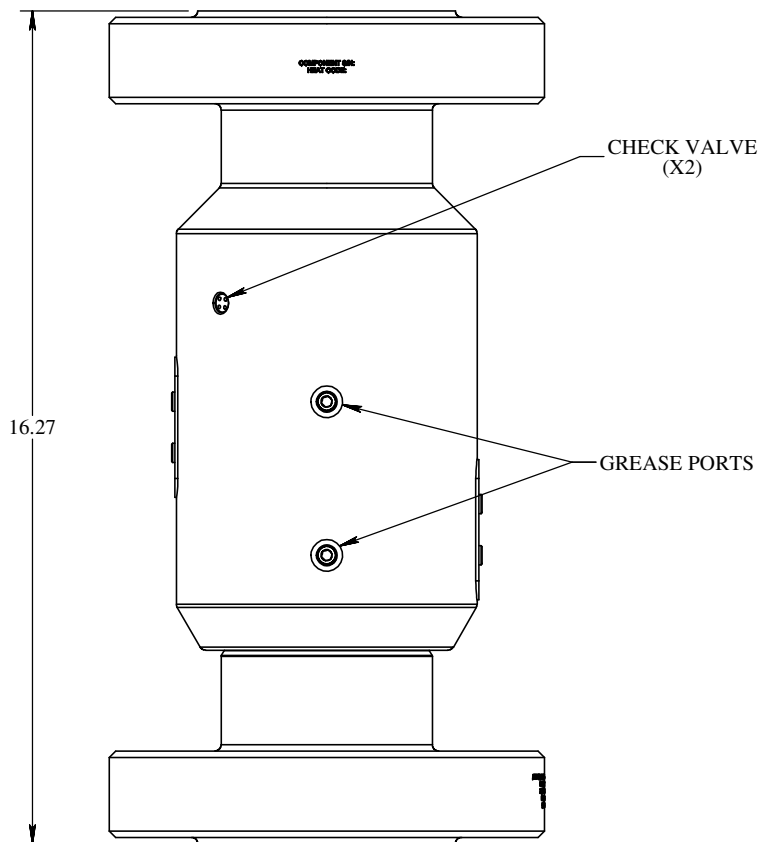
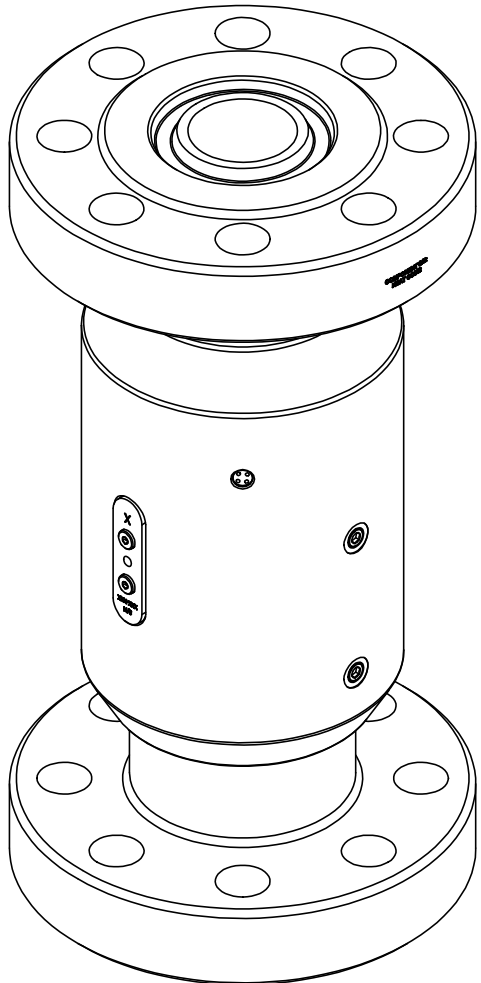


**ACCESSORIES**

PART NO.	DESCRIPTION	QTY.
SE-1112	GREASE, SYNTHETIC, INDUSTRIAL, LC 2, NLGI GRADE 1.5	14 oz.
SE-1015	RING GASKET, 2 1/16", BX152	2

**SPARE PARTS**

PART NO.	DESCRIPTION	QTY.
TSC-01985-SK	KIT, SEAL	1
TSC-01985-BK	KIT, BALL BEARING	1
SE-0196	GREASE FITTING, STRAIGHT, 1/8" PTF MALE	2



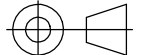
**NOTES:**

1. DESIGNED FOR DRILLING MUD LINES
2. WORKING PRESSURE - 2K PSI
3. TESTED AT 1.5 TIMES WORKING PRESSURE
4. 2-1/16" API 17D, TYPE 17SS FLANGE - BX-152 RING GROOVE, BOLTED CONNECTION ON BOTH ENDS
5. MATERIAL OF CONSTRUCTION: 410 STAINLESS STEEL
6. REMOVABLE PLUGS TO ACCESS 2 GREASE PORTS
7. CHECK VALVES TO PROTECT THE BEARINGS.
8. WEIGHT: 215 LBS.

**SPECIFICATIONS:**

8. MAX ROTATIONAL TORQUE: @ 0 PSI IS 172 LB. FT. / @ MWP IS 367 LB. FT.
9. MAX AXIAL LOAD: @ MWP IS 6,500 KG
10. MAX EFFECTIVE TENSION: @ MWP 6,500 KG
11. MAX BENDING MOMENT: @MWP 10 KNM
12. SUITABLE FOR 50 METERS SUBSEA
13. DESIGNED TO API 6A, 16D, AND 17D
14. MEETS NACE MR-0175

**PROPRIETARY AND CONFIDENTIAL:**  
 THE INFORMATION CONTAINED IN THIS DRAWING IS THE SOLE PROPERTY OF THE SUBSEA COMPANY INC. ANY REPRODUCTION IN PART OR AS A WHOLE WITHOUT THE WRITTEN PERMISSION OF THE SUBSEA COMPANY INC IS PROHIBITED.

3RD ANGLE PROJECTION:  



INTERPRET GEOMETRIC TOLERANCING PER: ASME Y14.5

**WORKMANSHIP STANDARD PER WI 751-001**

UNLESS OTHERWISE SPECIFIED:  
 ALL DIMENSIONS ARE IN INCHES

WEIGHT: 215 LBS.

	NAME	DATE
DRAWN	GREG	1/13/22
CHECKED	TC	1/13/22
APPROVED	AC	1/13/22

 <b>THE SUBSEA COMPANY INC</b>		<b>REV</b> <b>D1</b>
<b>SIZE</b> <b>B</b>	TITLE: SWIVEL, LC, MPD, 2-1/16" 5K FLANGE, BX-152, 2K MWP, API 17SS	
DWG. NO. TSC-01985-GA		SHEET 1 OF 1