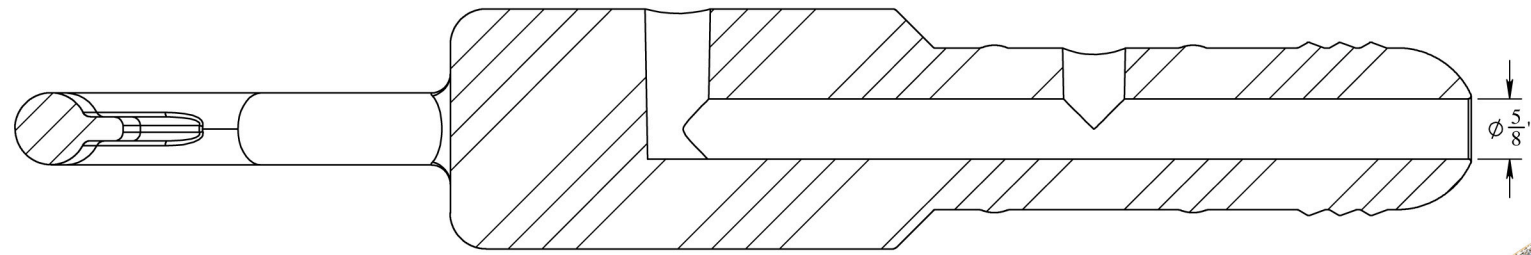
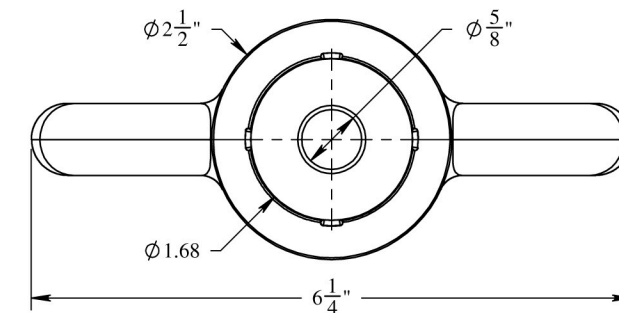
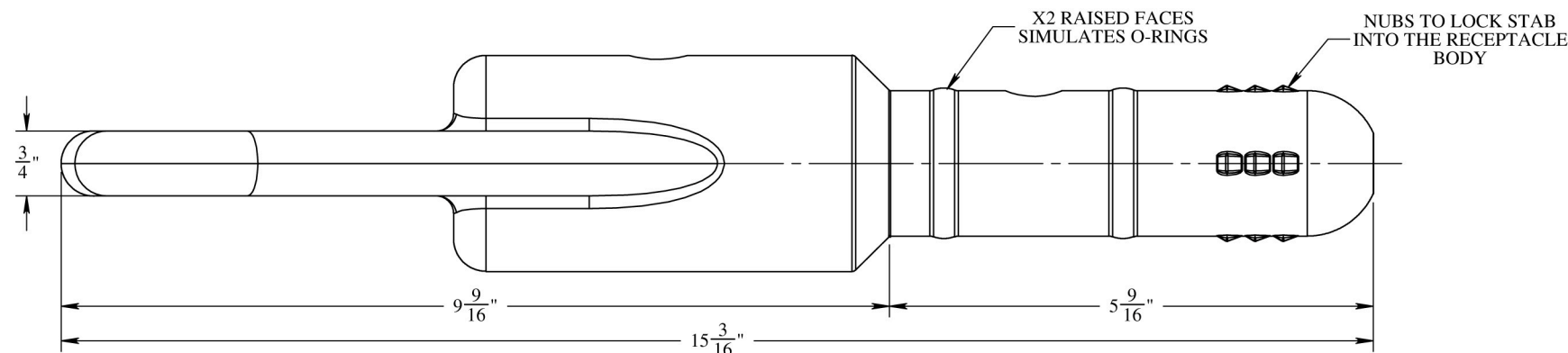
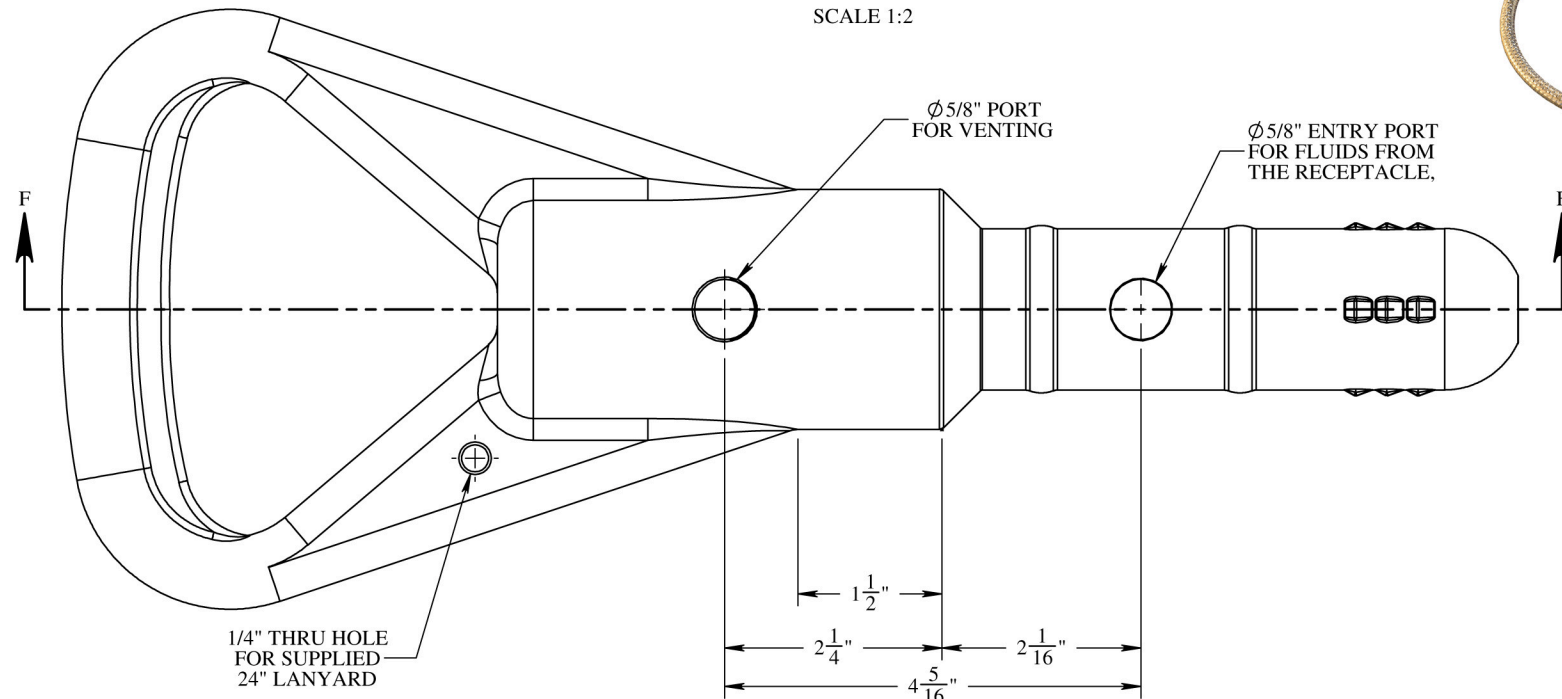


REVISIONS				
REV.	DESCRIPTION	ECO #	DATE	APPROVED
A1	RELEASE	2018-020	3/26/2018	GNB



SECTION F-F
SCALE 1:2

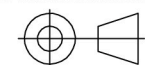


NOTES:

- MATERIAL OF CONSTRUCTION: ROV STAB
- MAIN BODY IS 75A DUROMETER POLYMER
- DESIGNED TO API 17H TYPE B STANDARDS
- PORTED - 5/8" DIAMETER
- SUPPLIED WITH A 24" STAINLESS STEEL LANYARD FOR A 1/4" MOUNTING BOLT.
- WEIGHT: 2 LBS.

PROPRIETARY AND CONFIDENTIAL:
THE INFORMATION CONTAINED IN THIS DRAWING IS THE SOLE PROPERTY OF THE SUBSEA COMPANY INC. ANY REPRODUCTION IN PART OR AS A WHOLE WITHOUT THE WRITTEN PERMISSION OF THE SUBSEA COMPANY INC IS PROHIBITED.

3RD ANGLE PROJECTION:




INTERPRET GEOMETRIC TOLERANCING PER: ASME Y14.5

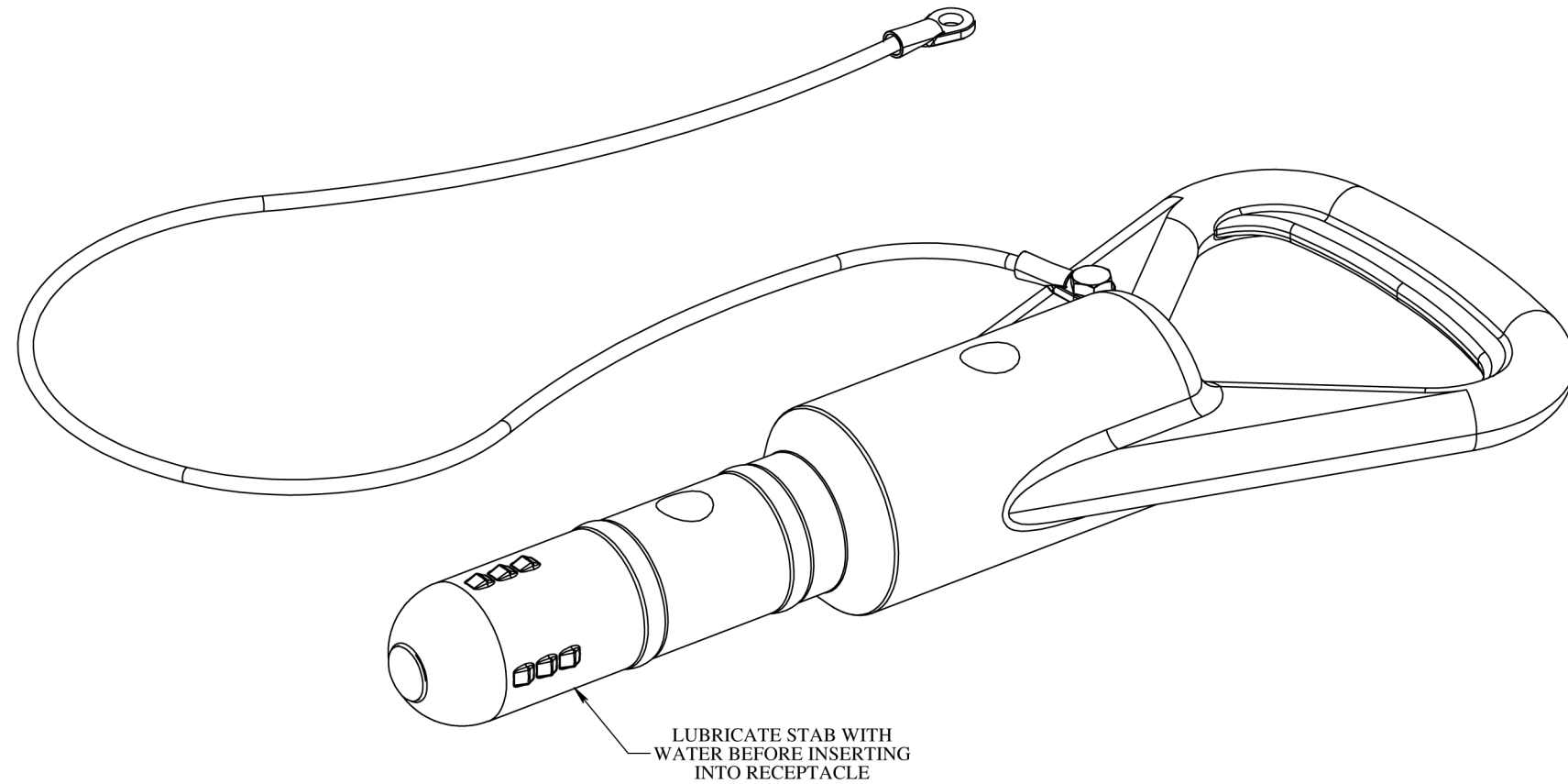
WORKMANSHIP STANDARD PER WI 751-001

UNLESS OTHERWISE SPECIFIED: ALL DIMENSIONS ARE IN INCHES

WEIGHT: 1.81 LBS.

	NAME	DATE
DRAWN	GREG	3/26/18
CHECKED	RON	3/26/18
APPROVED	ANDY	3/26/18

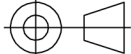
 THE SUBSEA COMPANY INC		REV
SIZE	TITLE:	REV
B	PORTED DUMMY STAB, API 17H TYPE B, POLYMER	A1
DWG. NO. TSC-01993-GA		SHEET 1 OF 2



NOTES:

1. MATERIAL OF CONSTRUCTION: ROV STAB
 - MAIN BODY IS 75A DUROMETER POLYMER
 - DESIGNED TO API 17H TYPE B STANDARDS
2. PORTED - 5/8" DIAMETER
3. SUPPLIED WITH A 24" STAINLESS STEEL LANYARD FOR A 1/4" MOUNTING BOLT.
4. WEIGHT: 2 LBS.

PROPRIETARY AND CONFIDENTIAL:
 THE INFORMATION CONTAINED IN THIS DRAWING IS THE SOLE PROPERTY OF THE SUBSEA COMPANY INC. ANY REPRODUCTION IN PART OR AS A WHOLE WITHOUT THE WRITTEN PERMISSION OF THE SUBSEA COMPANY INC IS PROHIBITED.

3RD ANGLE PROJECTION:


INTERPRET GEOMETRIC TOLERANCING PER: ASME Y14.5

WORKMANSHIP STANDARD PER WI 751-001

UNLESS OTHERWISE SPECIFIED: ALL DIMENSIONS ARE IN INCHES

WEIGHT: 1.81 LBS.

	NAME	DATE
DRAWN	GREG	3/26/18
CHECKED	RON	3/26/18
APPROVED	ANDY	3/26/18



THE SUBSEA COMPANY INC

SIZE	TITLE:	REV
B	PORTED DUMMY STAB, API 17H TYPE B, POLYMER	A1

DWG. NO. TSC-01993-GA

SHEET 2 OF 2