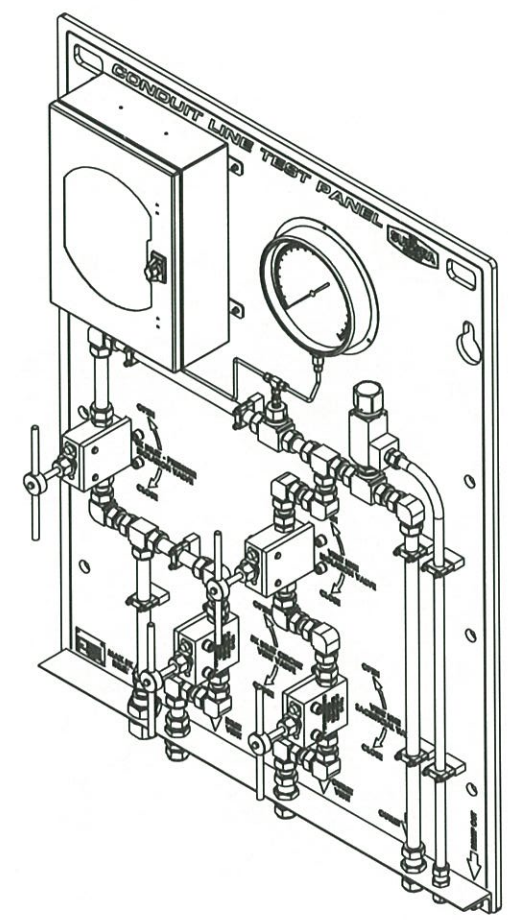
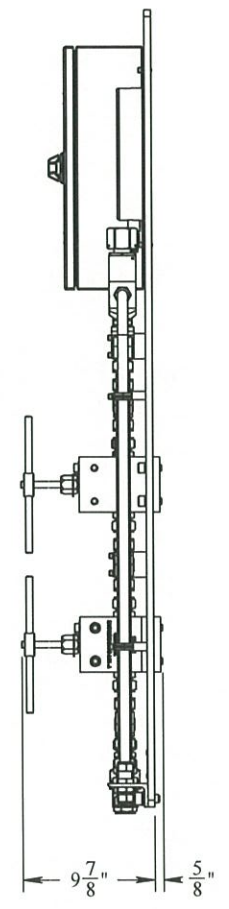
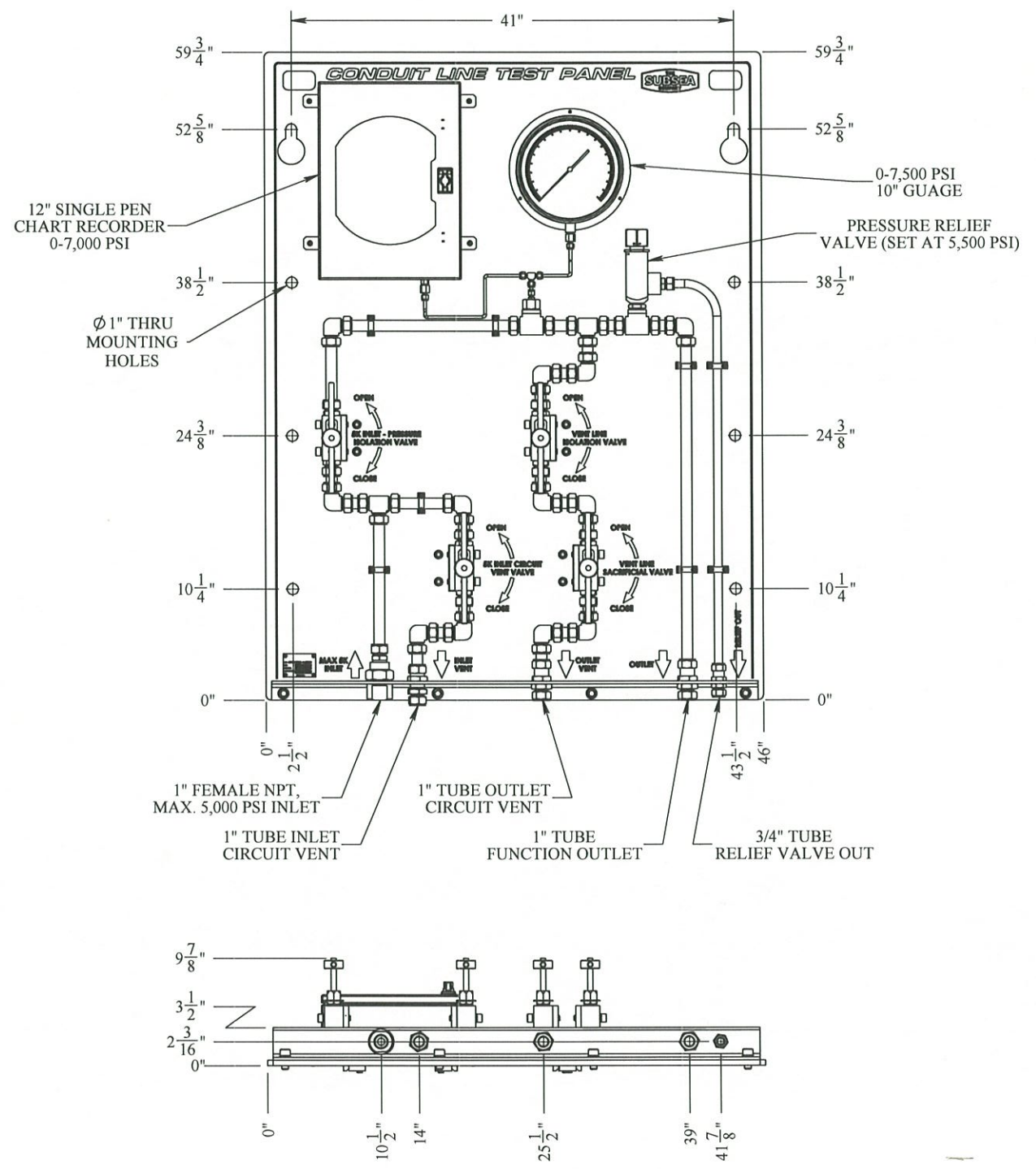



8 7 6 5 4 3 2 1

REVISIONS				
REV.	DESCRIPTION	ECO #	DATE	APPROVED
A1	RELEASE	2015-099	6/11/15	<i>CLB</i>



- NOTES:**
- PANEL MAXIMUM WORKING PRESSURE - 5,000 PSI
  - NEEDLE VALVES RATED AT 10,000 PSI
  - PRESSURE RELIEF VALVE SET AT 5,500 PSI
  - 0-7,500 PSI GAUGE, 10" FACE
  - 12" CHART RECORDER, 0-7,000 PSI, 316 SS ENCLOSURE, 96 MINUTE ROTATION, WIND UP
  - ALL STAINLESS STEEL MATERIAL AND COMPONENTS
  - ALL COMPONENTS ARE FRONT MOUNTED FOR EASE OF SERVICE

**PROPRIETARY AND CONFIDENTIAL:**  
 THE INFORMATION CONTAINED IN THIS DRAWING IS THE SOLE PROPERTY OF THE SUBSEA COMPANY INC. ANY REPRODUCTION IN PART OR AS A WHOLE WITHOUT THE WRITTEN PERMISSION OF THE SUBSEA COMPANY INC IS PROHIBITED.

3RD ANGLE PROJECTION:  



INTERPRET GEOMETRIC TOLERANCING PER: ASME Y14.5

WORKMANSHIP STANDARD PER WI 751-001

UNLESS OTHERWISE SPECIFIED: ALL DIMENSIONS ARE IN INCHES

WEIGHT: 449.85 lbs.

	NAME	DATE
DRAWN	<i>CLB</i>	6-12-15
CHECKED	<i>CLB</i>	6-12-15
Q.A.	<i>REP</i>	6-12-15
MFG./SALES	<i>REP</i>	6-12-15

 <b>THE SUBSEA COMPANY INC</b>		SIZE	TITLE:	REV
		<b>B</b>	CONDUIT LINE TEST PANEL	<b>A1</b>
DWG. NO.	TSC-01582-GA		SHEET 1 OF 1	

8 7 6 5 4 3 2 1