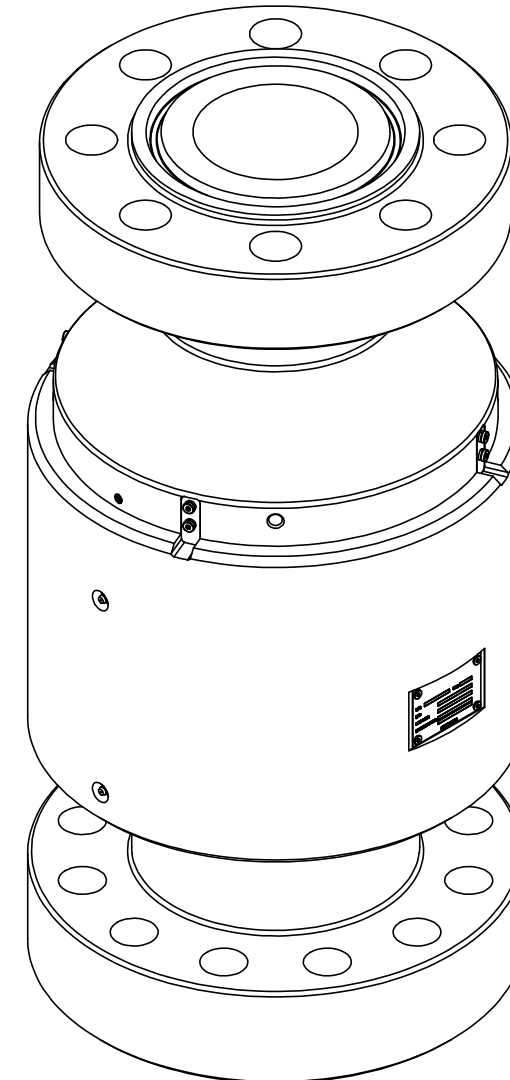
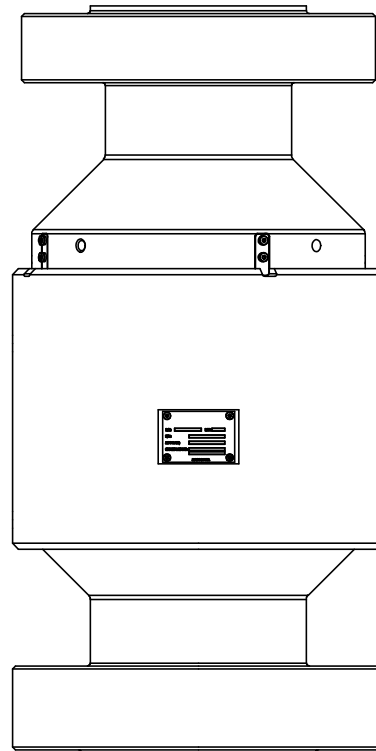
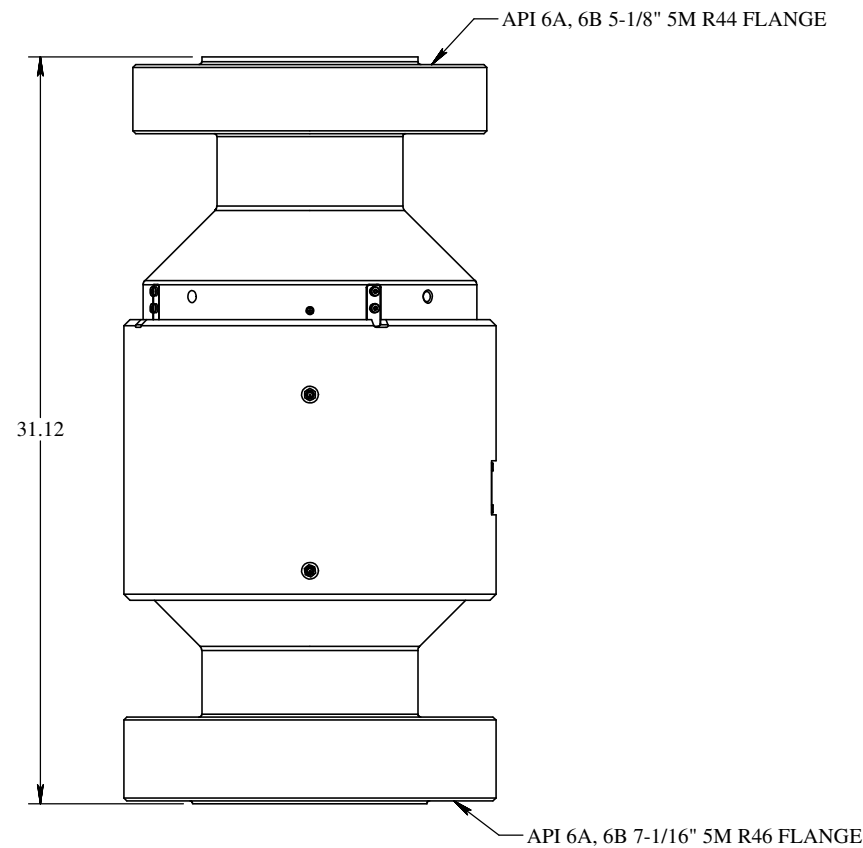
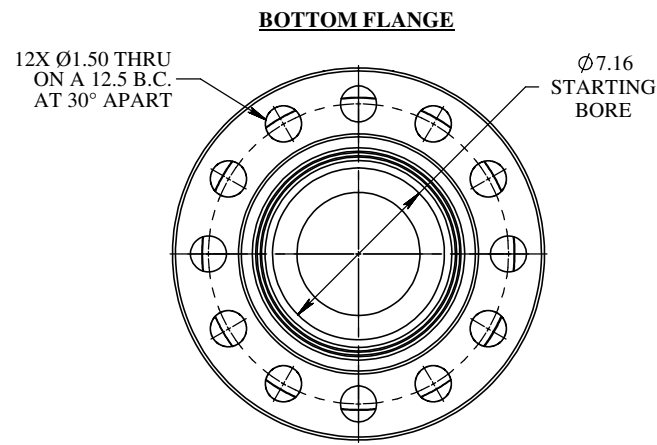
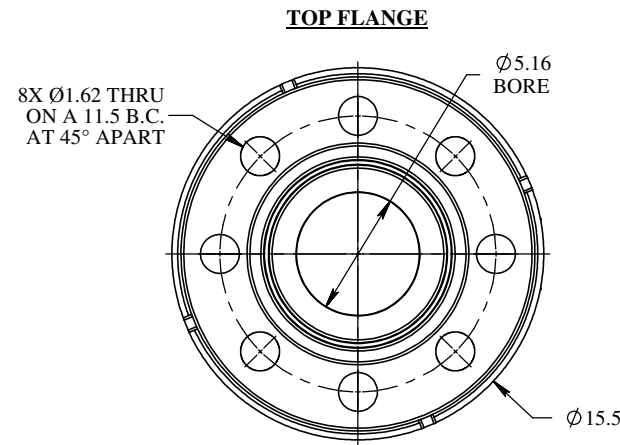


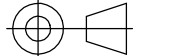
REVISIONS				
REV.	DESCRIPTION	ECO #	DATE	APPROVED
A1	RELEASE		1/25/2024	



SPECIFICATIONS:

- DESIGNED FOR DRILLING MUD LINES
- WORKING PRESSURE - 2K PSI
- TESTED AT 1.5 TIMES WORKING PRESSURE
- API 6A, 6B 5-1/8" 5M R44 FLANGE x API 6A, 6B 7-1/16" 5M R46 FLANGE
- DUAL HIGH PRESSURE SEALS
- VENT PORT
- CORROSION RESISTANT RING GROOVES
- MAX ROTATIONAL TORQUE: @ 0 PSI < 500 LB. FT. / @ MWP < 2,500 LB. FT.
- SWIVEL IS DESIGNED TO A COMBINED LOAD OF 2,000 PSI, 19,500 kg AXIAL LOAD, AND 19 kNm BENDING MOMENT.
- SUITABLE FOR 50 METERS SUBSEA
- DESIGNED TO API 6A
- MEETS NACE MR-0175 FOR H2S SERVICE

PROPRIETARY AND CONFIDENTIAL:
 THE INFORMATION CONTAINED IN THIS DRAWING IS THE SOLE PROPERTY OF THE SUBSEA COMPANY INC. ANY REPRODUCTION IN PART OR AS A WHOLE WITHOUT THE WRITTEN PERMISSION OF THE SUBSEA COMPANY INC IS PROHIBITED.

3RD ANGLE PROJECTION:



INTERPRET GEOMETRIC TOLERANCING PER: ASME Y14.5

WORKMANSHIP STANDARD PER WI 751-001

UNLESS OTHERWISE SPECIFIED:
 ALL DIMENSIONS ARE IN INCHES

WEIGHT: 695 LBS.

	NAME	DATE
DRAWN	GREG	1/29/24
CHECKED	TAYLOR	1/29/24
APPROVED	ANDY	1/29/24

 THE SUBSEA COMPANY INC		REV
SIZE	TITLE:	A1
B	SWIVEL, TRB, 5-1/8" 5M R44 FLANGE x 7-1/16" 5M R46 FLANGE	
DWG. NO.	TSC-02937-GA	SHEET 1 OF 1