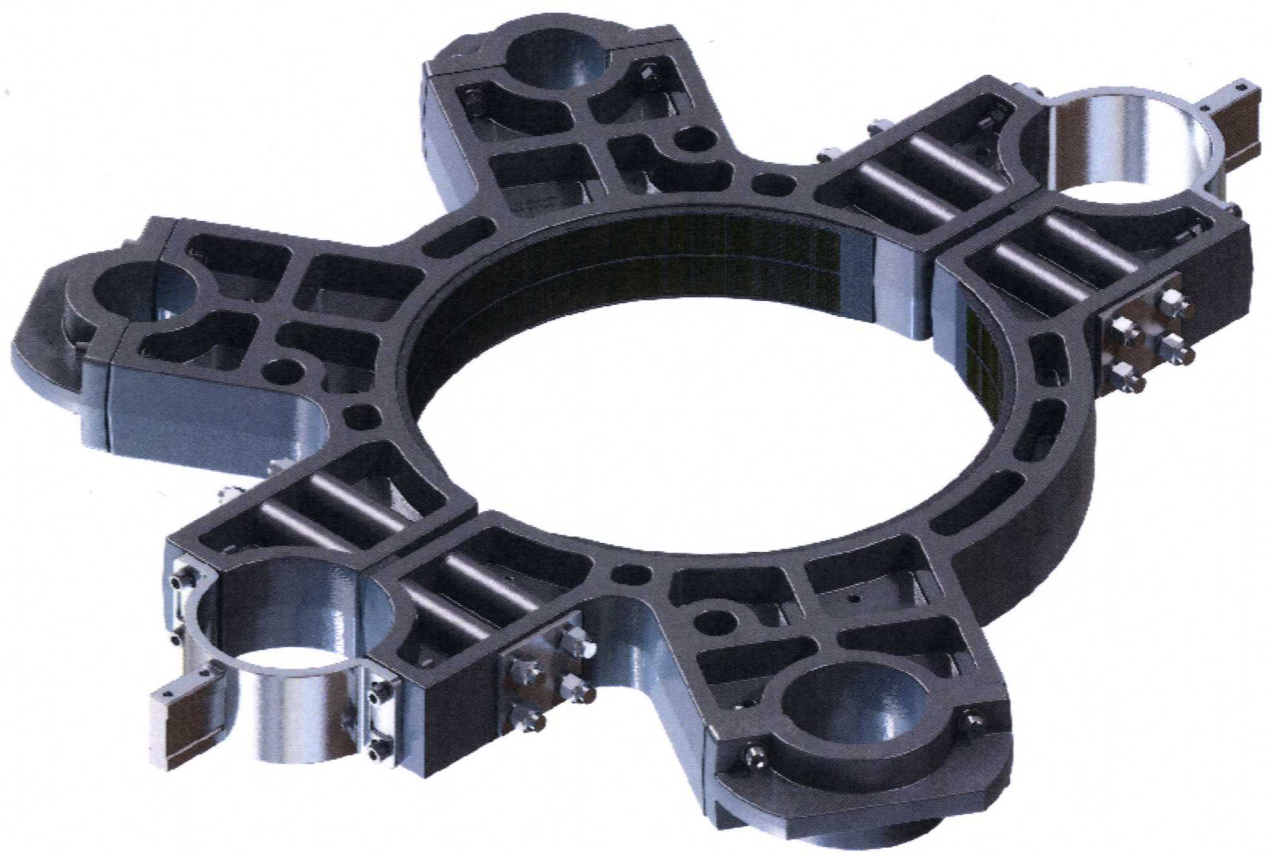
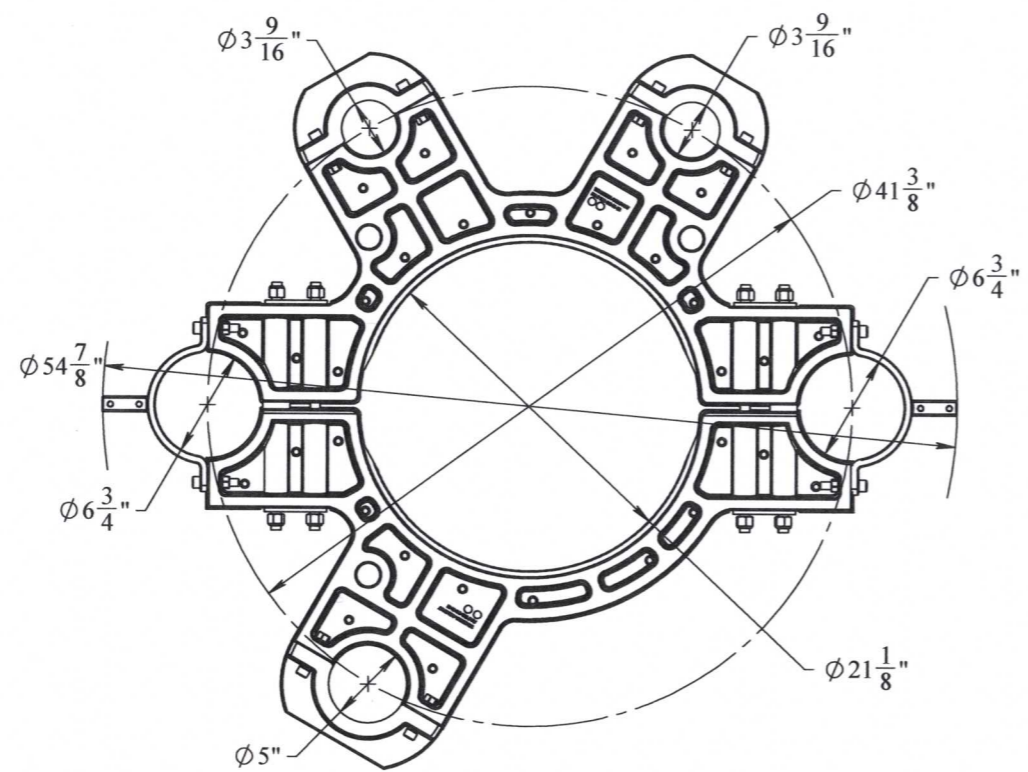



REVISIONS				
REV.	DESCRIPTION	ECO #	DATE	APPROVED
A1	RELEASE	2013-349	8/28/2013	
A2	ADDED MATERIAL NOTES	2013-366	9/5/2013	CMB




- NOTES:
- MATERIAL OF CONSTRUCTION:
 - POLYURETHANE COMPOSITE
 - STAINLESS STEEL FRAMEWORK
 - STAINLESS STEEL CHOKE & KILL CLAMPS/MOUNT
 - STAINLESS STEEL HARDWARE
 - WEIGHT: 154 LBS.

PROPRIETARY AND CONFIDENTIAL:
 THE INFORMATION CONTAINED IN THIS DRAWING IS THE SOLE PROPERTY OF THE SUBSEA COMPANY INC. ANY REPRODUCTION IN PART OR AS A WHOLE WITHOUT THE WRITTEN PERMISSION OF THE SUBSEA COMPANY INC IS PROHIBITED.

3RD ANGLE PROJECTION:


INTERPRET GEOMETRIC TOLERANCING PER: ASME Y14.5

WORKMANSHIP STANDARD PER WI 751-001	NAME: <i>CMB</i> DATE: <i>9-10-13</i>	 THE SUBSEA COMPANY INC	SIZE: B TITLE: RISER CLAMP, COMPOSITE WITH 2 BASES FOR RETRACTABLE MUX CLAMP REV: A2
UNLESS OTHERWISE SPECIFIED: ALL DIMENSIONS ARE IN INCHES	CHECKED: <i>CMB</i> DATE: <i>9-10-13</i> Q.A.: <i>CMB</i> DATE: <i>9-10-13</i> MFG APPR.: <i>T. B...</i> DATE: <i>9-10-13</i>		
WEIGHT: 153.431 lbs.	DO NOT SCALE DRAWING	DWG. NO. TSC-01204-GA	SHEET 1 OF 1