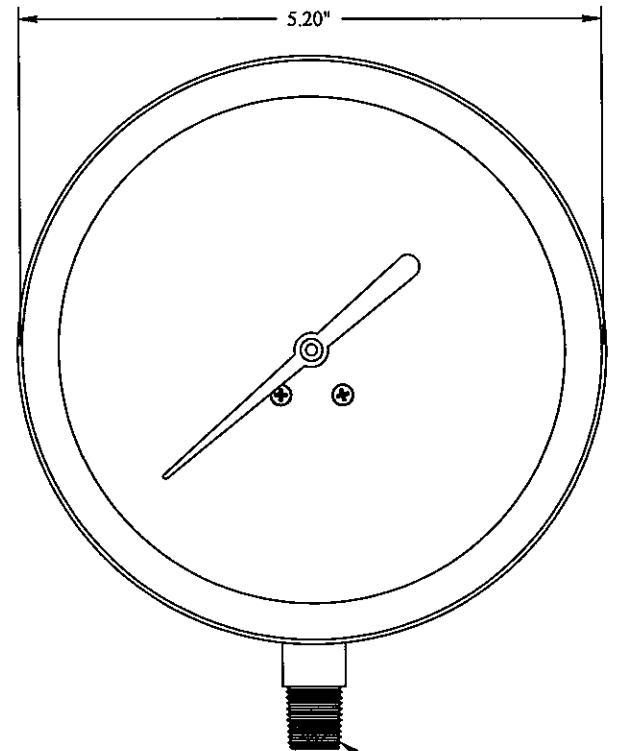
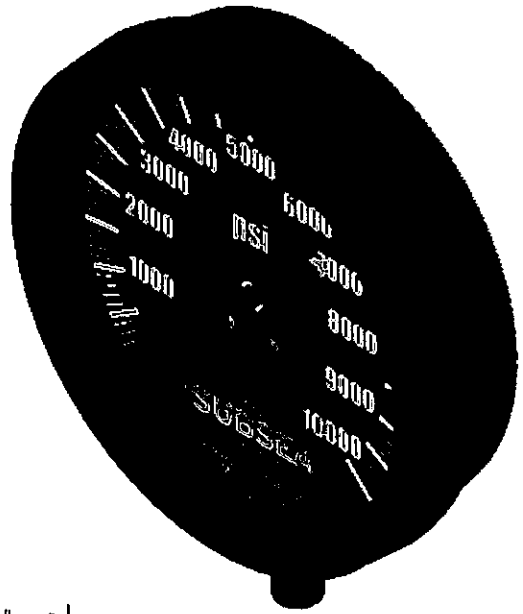
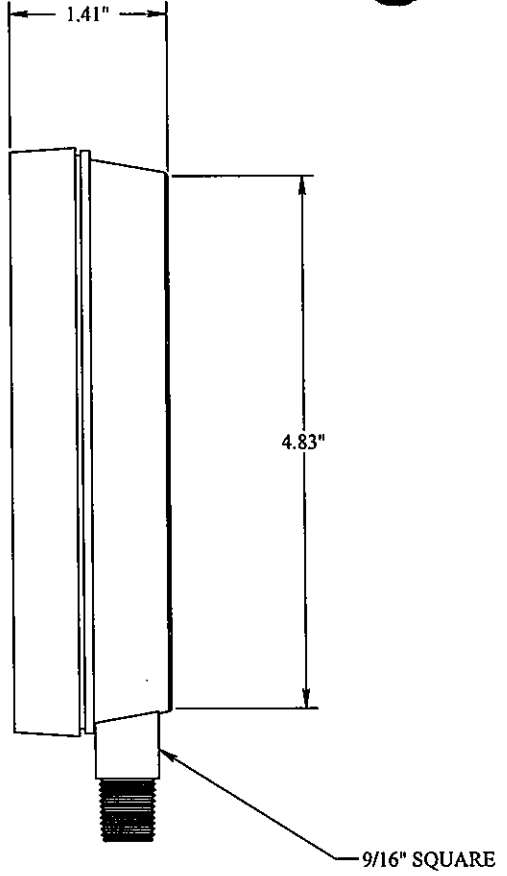


8 7 6 5 4 3 2 1

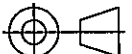
REVISIONS				
REV.	DESCRIPTION	ECO #	DATE	APPROVED
A1	RELEASE	2014-247	7/11/2014	CUB



1/4" NPT THREADS



PROPRIETARY AND CONFIDENTIAL:
 THE INFORMATION CONTAINED IN THIS DRAWING IS THE SOLE PROPERTY OF THE SUBSEA COMPANY INC. ANY REPRODUCTION IN PART OR AS A WHOLE WITHOUT THE WRITTEN PERMISSION OF THE SUBSEA COMPANY INC IS PROHIBITED.

3RD ANGLE PROJECTION:


INTERPRET GEOMETRIC TOLERANCING PER: ASME Y14.5

WORKMANSHIP STANDARD PER WI 751-001

UNLESS OTHERWISE SPECIFIED:
 ALL DIMENSIONS ARE IN INCHES

WEIGHT: 0.80 lbs.

	NAME	DATE
DRAWN	TLC	7/11/14
CHECKED	CUB	7-16-14
Q.A.	Ryo	7-15-14
MFG APPR.	h	7-16-14

SCALE: 3:5

DO NOT SCALE DRAWING

THE SUBSEA COMPANY		THE SUBSEA COMPANY INC	
SIZE B	TITLE: SUBSEA PRESSURE GAUGE - 4.5" STEM MOUNT	DWG. NO. TSC-02068-GA	REV A1
		SHEET 1 OF 1	

8 7 6 5 4 3 2 1