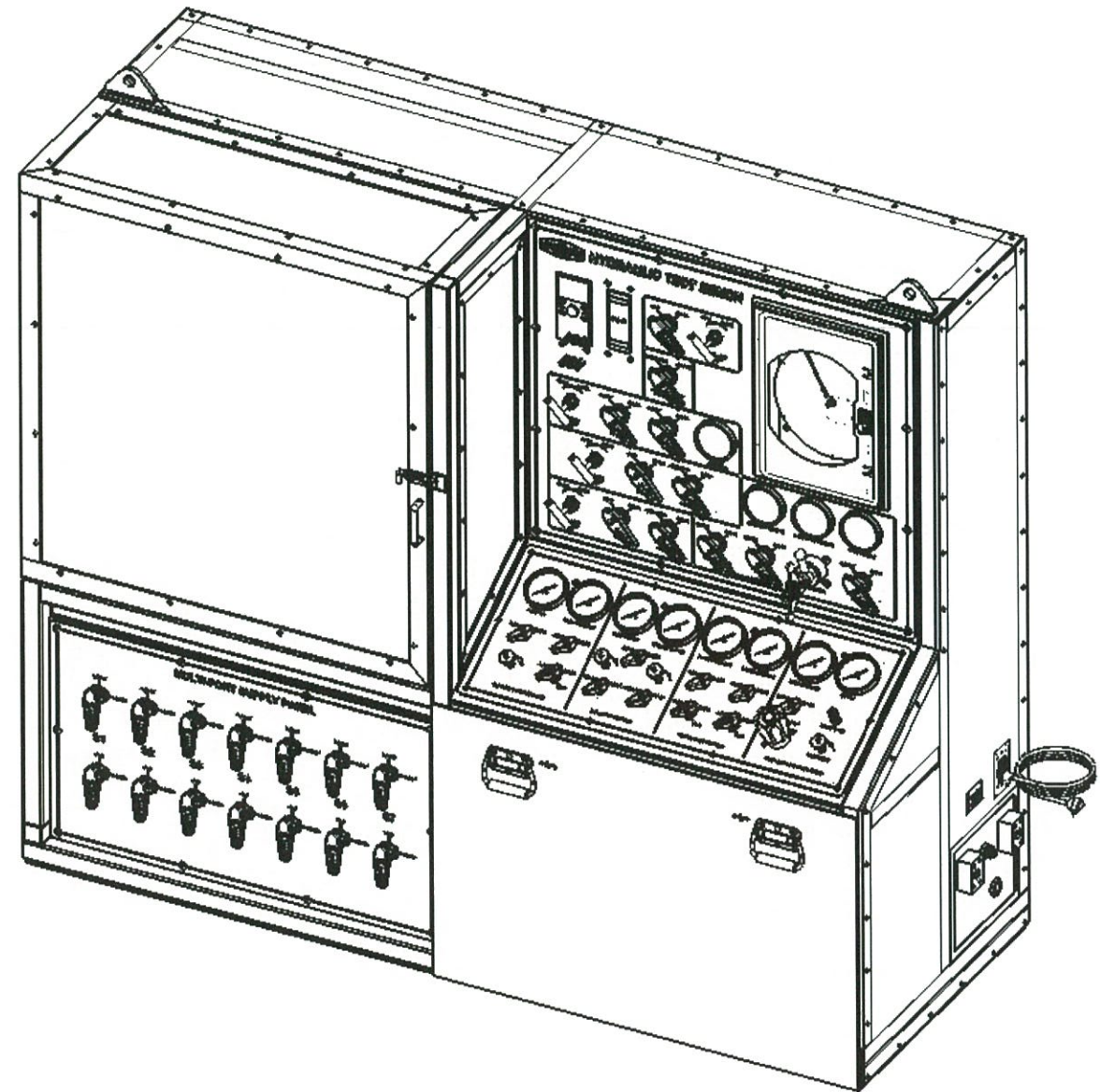


REVISIONS				
REV.	DESCRIPTION	ECO #	DATE	APPROVED
A1	RELEASE	2016-007	1/18/16	GNB
B1	CHANGE MULTI-PORT PANEL AND TUBING, ADD HOSE FOR CHART RECORDER, ADD TAG	2016-043	4/22/16	GNB

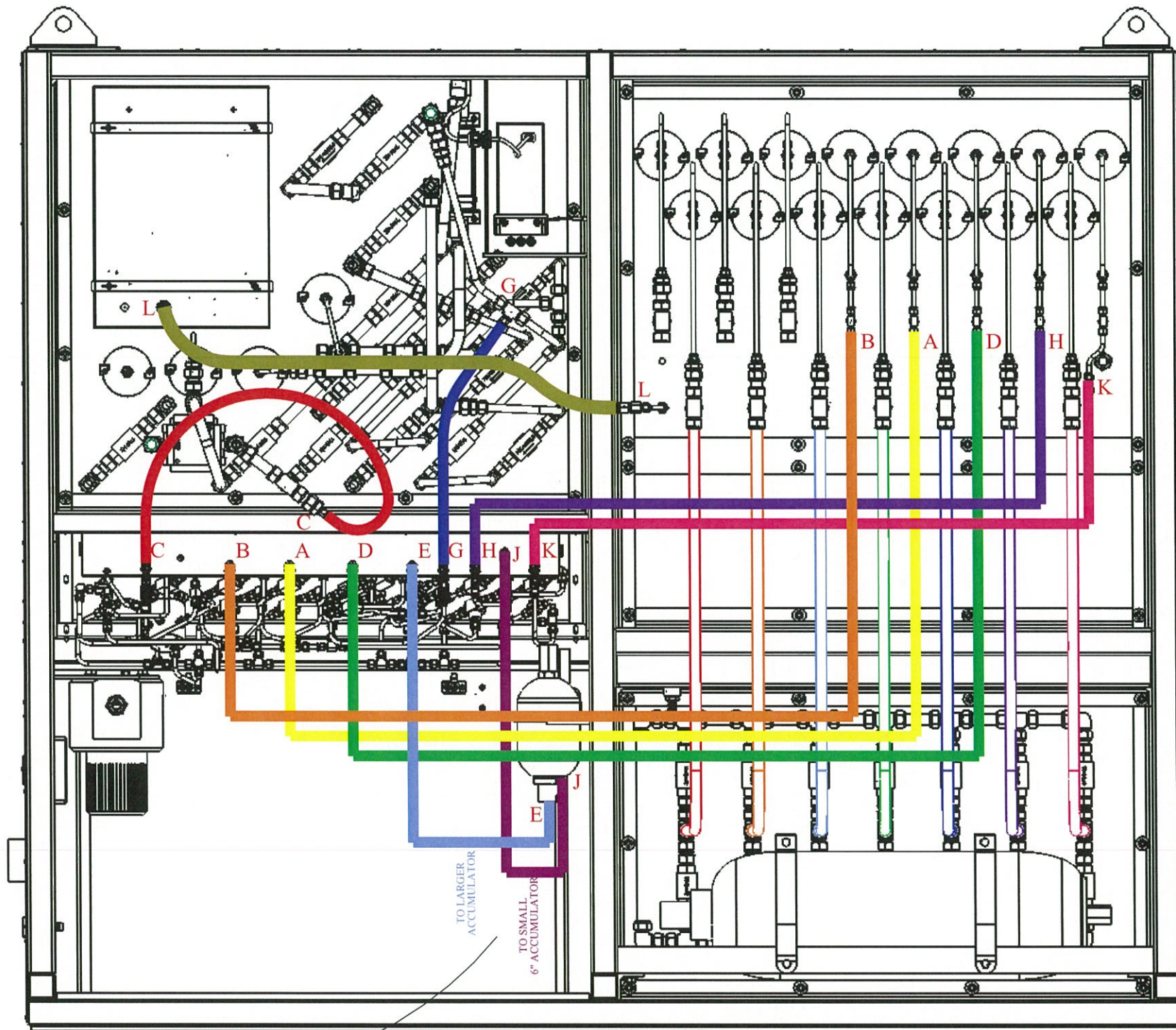
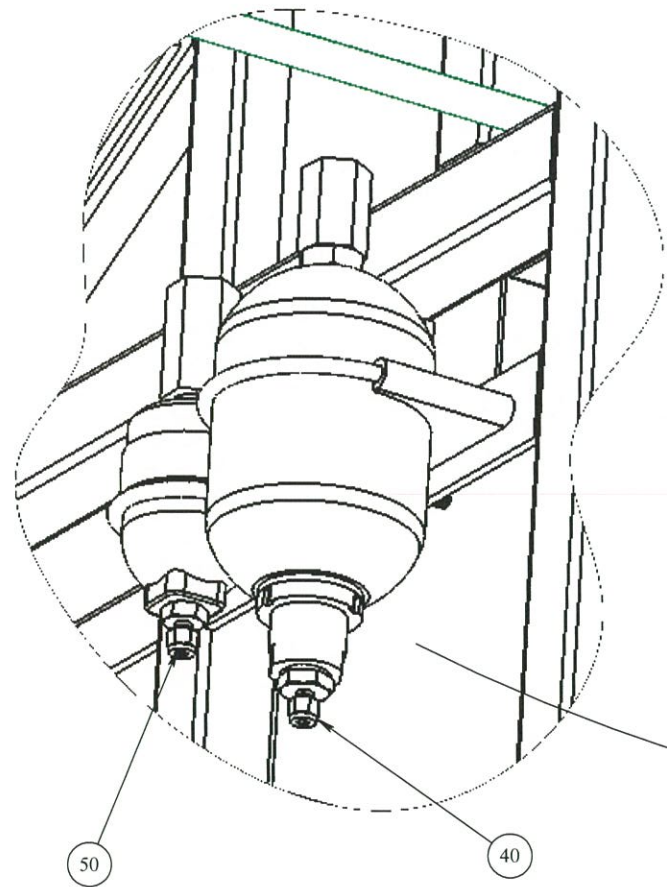
ITEM NO.	PART NUMBER	DESCRIPTION	QTY.
10	TSC-01753	COMPONENTS AND FRAME ASSEMBLY, MK3 TEST BENCH	1
20	SE-1705	FITTING, PIPE, HOSE BARB, 3/4" NPT X 1/2" ID HOSE, BRASS	1
30	SE-1653	POWER CORD, SJT, 0.325"OD, 10 FT., 10A, GRAY	1
40	SE-1651	FITTING, TUBING, 3/4" NPT TO 1/4" TUBE, 316 SS	1
50	SE-1646	FITTING, TUBE, 1/4" X 3/4-16 SAE ORS, STRAIGHT, 316 SS	1
60	SE-1627	BUSHING, REDUCER 1-1/4 NPTM x 3/4" NPTF STAINLESS STEEL	2
70	SE-1519-120	HOSE, 1/4", 1/4" TUBING STUBS, 5,000 PSI WP, 120" LONG	5
80	SE-1519-50	HOSE, 1/4", 1/4" TUBING STUBS, 5,000 PSI WP, 50" LONG	1
90	SE-1519-48	HOSE, 1/4", 1/4" TUBING STUBS, 5,000 PSI WP, 48" LONG	4
100	SE-1435	CLAMP, STAUFF, SINGLE 3/4" TUBE	7
110	SE-1217	TUBING, BRAIDED, CLEAR, 3/4" OD x 1/2" ID, PVC	65"
120	SE-1175	TUBE FITTING, UNION ELBOW, 3/4 IN. TUBE O.D., SS SWAGelok	12
130	SE-1168	TUBE FITTING, UNION TEE, 3/4 IN. TUBE O.D., SS SWAGelok	3
140	SE-1166	TUBE FITTING, MALE ELBOW, 3/4 IN. TUBE O.D. x 3/4 IN. MALE NPT, SS SWAGelok	2
150	SE-0924	CLAMP, HOSE, 7/8", SS	2
160	SE-0915	FITTING, PIPE, HOSE BARB, 1/2" NPT X 1/2" ID HOSE, BRASS	1
170	SE-0549	CABLE TIE MOUNTING PAD, 2-WAY, ADHESIVE BACK W/MOUNTING HOLE	5
180	SE-0168-10	TUBING, 3/4" x .109 WT, 5800 PSI, 316 SS	120FT
190	SE-0129-07	CHARTS FOR CHART RECORDER 0-10000 PSI 1 HOUR TIME PERIOD	100
200	MS-0061-E	ENGRAVED METAL NAMEPLATE 2, 3" X 2-1/8"	1
210	FN-NE14S	NUT, HEX, NYLON INSERT, 1/4"-20, SS	4
220	FN-00268	BOLT, HEX, 1/4"-20 x 3-1/2" LONG, 316 SS	4
230	FN-00107	RIVET, BLIND, 5/32" DIA, .394" LG	4




PROPRIETARY AND CONFIDENTIAL: THE INFORMATION CONTAINED IN THIS DRAWING IS THE SOLE PROPERTY OF THE SUBSEA COMPANY INC. ANY REPRODUCTION IN PART OR AS A WHOLE WITHOUT THE WRITTEN PERMISSION OF THE SUBSEA COMPANY INC IS PROHIBITED.	WORKMANSHIP STANDARD PER WI 751-001	<table border="1"> <tr><td>NAME</td><td>DATE</td></tr> <tr><td>Drawn</td><td>4-27-16</td></tr> <tr><td>Checked</td><td>4-28-16</td></tr> <tr><td>Q.A.</td><td>4-28-16</td></tr> <tr><td>MFG APPR.</td><td>4-28-16</td></tr> </table>	NAME	DATE	Drawn	4-27-16	Checked	4-28-16	Q.A.	4-28-16	MFG APPR.	4-28-16		THE SUBSEA COMPANY INC
	NAME	DATE												
Drawn	4-27-16													
Checked	4-28-16													
Q.A.	4-28-16													
MFG APPR.	4-28-16													
3RD ANGLE PROJECTION: 	UNLESS OTHERWISE SPECIFIED: ALL DIMENSIONS ARE IN INCHES	WEIGHT: 2783LBS.	SIZE B	TITLE: TEST BENCH ASSEMBLY, MK3	REV B1									
			DWG. NO. TSC-01752	SHEET 1 OF 6										

FLEXIBLE HOSES		
LETTER	DESCRIPTION	LENGTH
A	A-PILOT	120"
B	B-PILOT	120"
C	SUPPLY	48"
D	REGULATOR PILOT	120"
E	ACCUMULATOR	48"
G	RETURN	48"
H	SOLENOID SUPPLY	120"
J	6" ACCUMULATOR	48"
K	SOLENOID FUNCTION	120"
L	CHART RECORDER	50"

B1



PROPRIETARY AND CONFIDENTIAL:
 THE INFORMATION CONTAINED IN THIS DRAWING IS THE SOLE PROPERTY OF THE SUBSEA COMPANY INC. ANY REPRODUCTION IN PART OR AS A WHOLE WITHOUT THE WRITTEN PERMISSION OF THE SUBSEA COMPANY INC IS PROHIBITED.

3RD ANGLE PROJECTION:
 INTERPRET GEOMETRIC TOLERANCING PER: ASME Y14.5

WORKMANSHIP STANDARD
 PER WI 751-001

UNLESS OTHERWISE SPECIFIED:
 ALL DIMENSIONS ARE IN INCHES

WEIGHT: 2783LBS.

NAME	DATE
DRAWN: <i>Conley</i>	4-27-16
CHECKED:	
Q.A.:	
MFG APPR.:	4-28-16

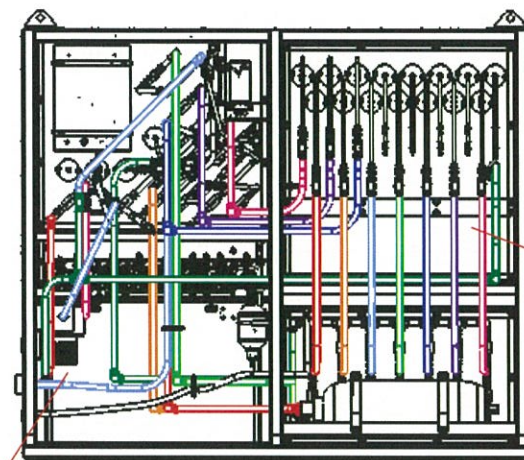
THE SUBSEA COMPANY THE SUBSEA COMPANY INC

SIZE: **B** TITLE: TEST BENCH ASSEMBLY, MK3

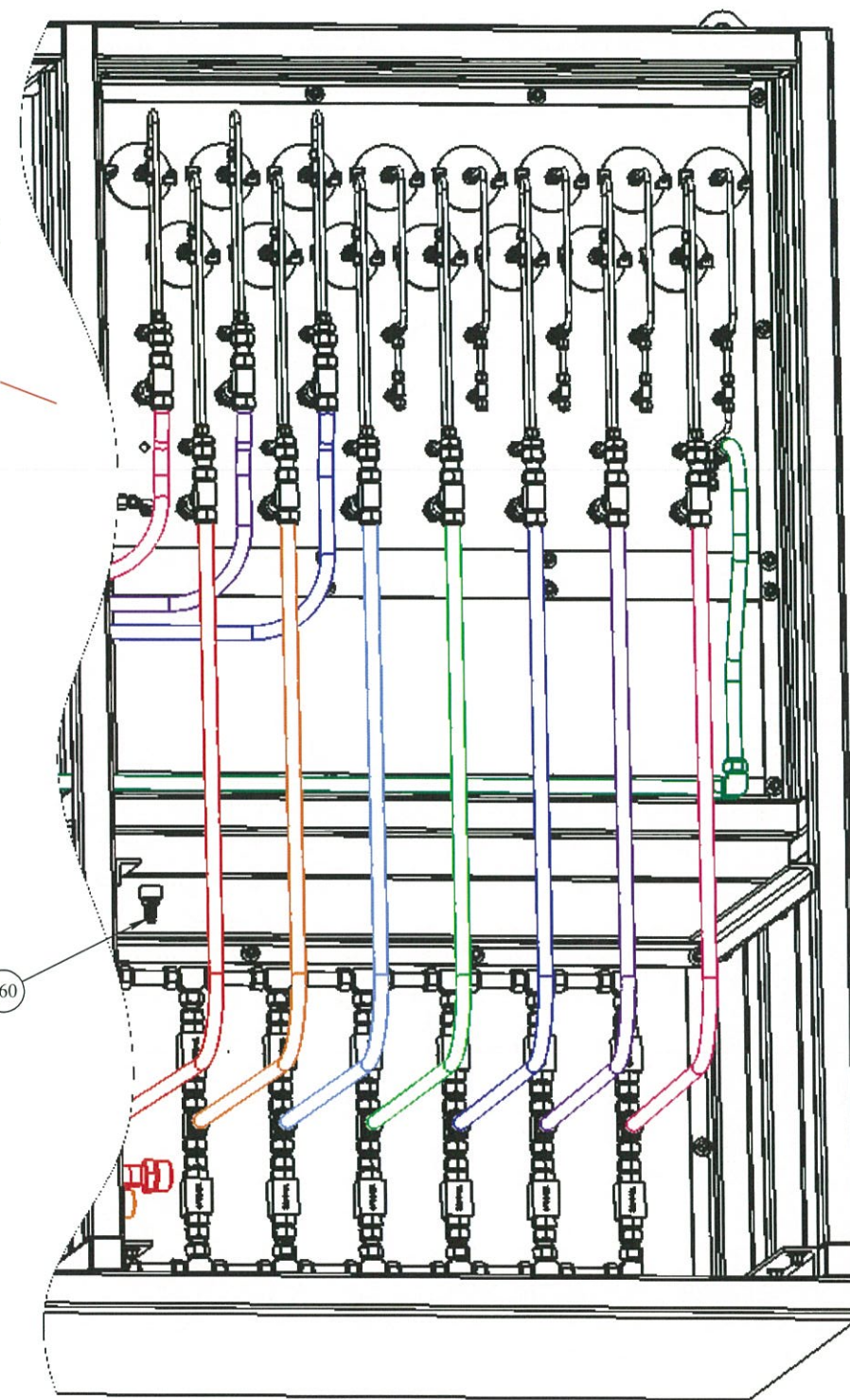
DWG. NO. TSC-01752

REV **B1**

SHEET 2 OF 6



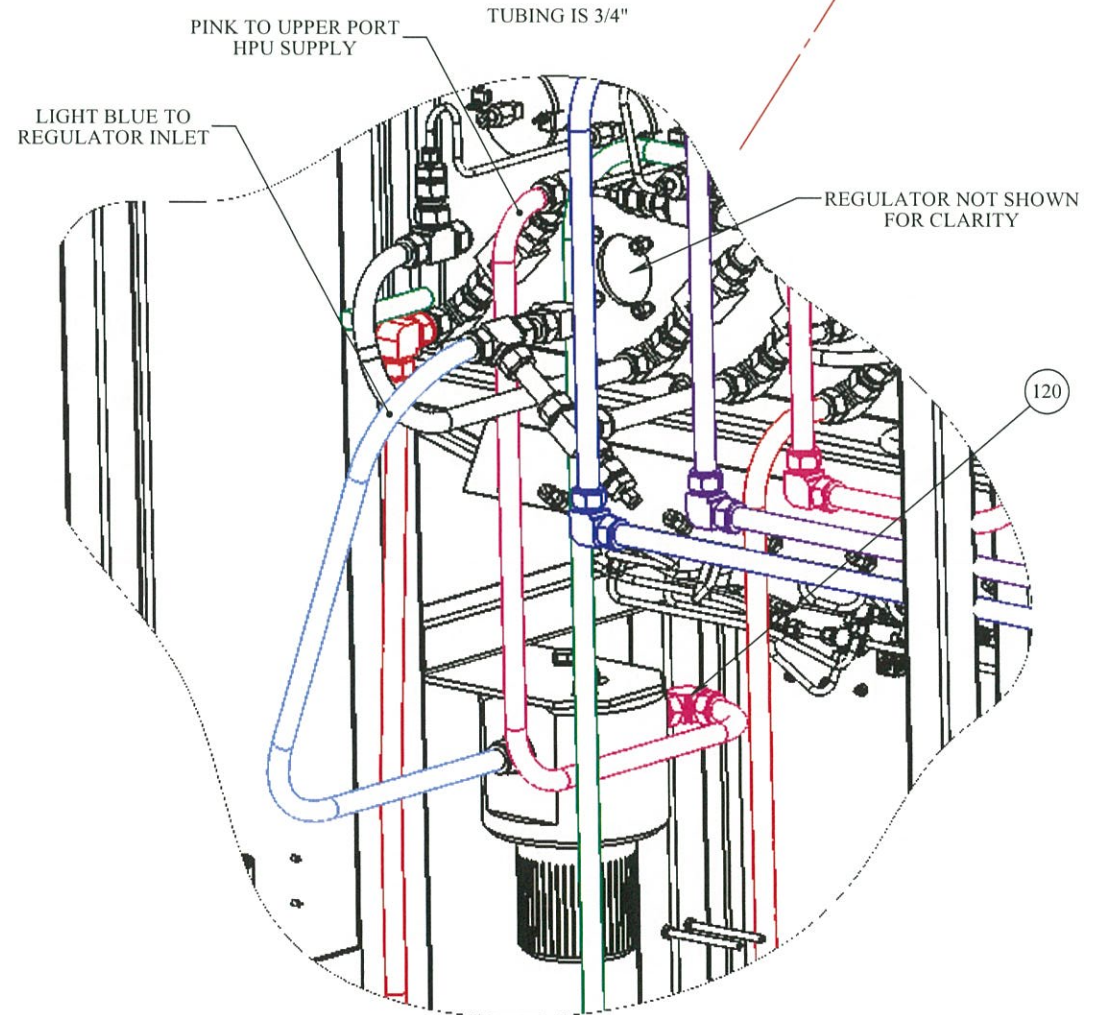
**UPPER LEFT
TO
LOWER LEFT
PLUMBING**




B1
ALL TUBING
IS 3/4"

FILTER PLUMBING

TUBING IS 3/4"



PROPRIETARY AND CONFIDENTIAL:
THE INFORMATION CONTAINED IN THIS DRAWING IS THE SOLE PROPERTY OF THE SUBSEA COMPANY INC. ANY REPRODUCTION IN PART OR AS A WHOLE WITHOUT THE WRITTEN PERMISSION OF THE SUBSEA COMPANY INC IS PROHIBITED.

3RD ANGLE PROJECTION:


INTERPRET GEOMETRIC TOLERANCING PER: ASME Y14.5

WORKMANSHIP STANDARD PER WI 751-001

UNLESS OTHERWISE SPECIFIED:
ALL DIMENSIONS ARE IN INCHES

WEIGHT: 2783LBS.

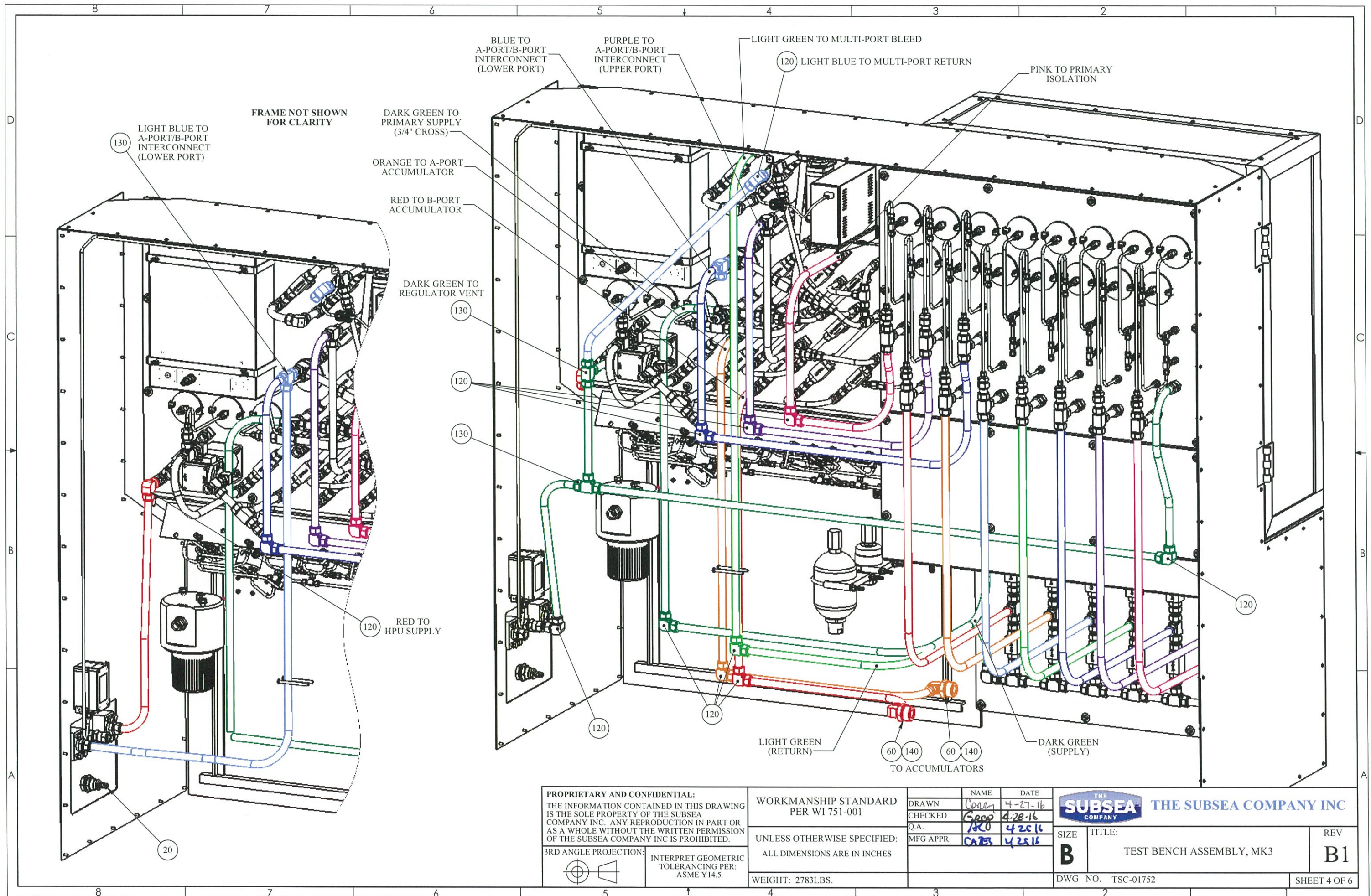
	NAME	DATE
DRAWN	Corbin	4-27-16
CHECKED	Gilroy	4-28-16
Q.A.	AL	4-29-16
MFG APPR.	DATSON	4-29-16

THE SUBSEA COMPANY THE SUBSEA COMPANY INC

SIZE: **B** TITLE: TEST BENCH ASSEMBLY, MK3

DWG. NO. TSC-01752

REV **B1** SHEET 3 OF 6



BLUE TO A-PORT/B-PORT INTERCONNECT (LOWER PORT)

PURPLE TO A-PORT/B-PORT INTERCONNECT (UPPER PORT)

LIGHT GREEN TO MULTI-PORT BLEED

(120) LIGHT BLUE TO MULTI-PORT RETURN

PINK TO PRIMARY ISOLATION

FRAME NOT SHOWN FOR CLARITY

(130) LIGHT BLUE TO A-PORT/B-PORT INTERCONNECT (LOWER PORT)

DARK GREEN TO PRIMARY SUPPLY (3/4" CROSS)

ORANGE TO A-PORT ACCUMULATOR

RED TO B-PORT ACCUMULATOR

DARK GREEN TO REGULATOR VENT

(130)

(120)

(130)

(120) RED TO HPU SUPPLY

(120)

(120)

(120)

LIGHT GREEN (RETURN)

(60) (140) (60) (140) TO ACCUMULATORS

DARK GREEN (SUPPLY)

(120)

PROPRIETARY AND CONFIDENTIAL:
 THE INFORMATION CONTAINED IN THIS DRAWING IS THE SOLE PROPERTY OF THE SUBSEA COMPANY INC. ANY REPRODUCTION IN PART OR AS A WHOLE WITHOUT THE WRITTEN PERMISSION OF THE SUBSEA COMPANY INC IS PROHIBITED.

3RD ANGLE PROJECTION:

INTERPRET GEOMETRIC TOLERANCING PER: ASME Y14.5

WORKMANSHIP STANDARD PER W1 751-001

UNLESS OTHERWISE SPECIFIED: ALL DIMENSIONS ARE IN INCHES

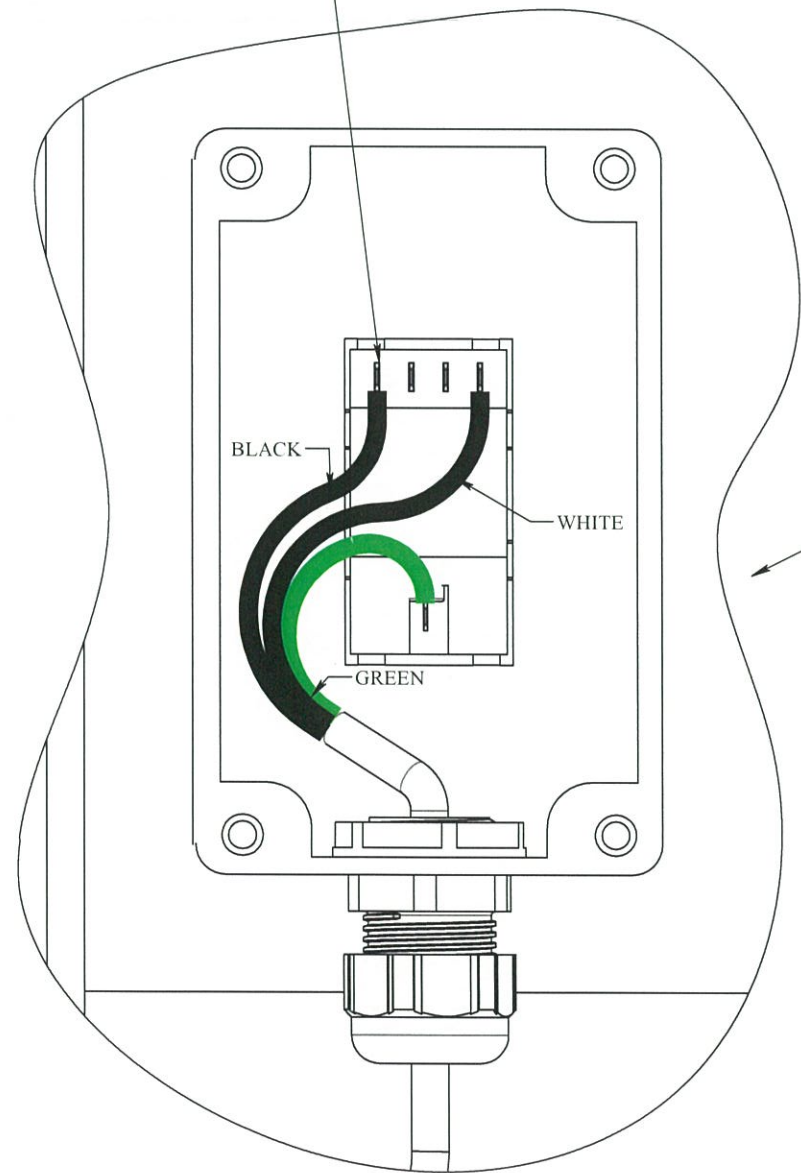
WEIGHT: 2783LBS.

NAME	DATE
CONY	4-27-16
CHEKED	4-28-16
Q.A.	4-28-16
MFG APPR.	4-28-16

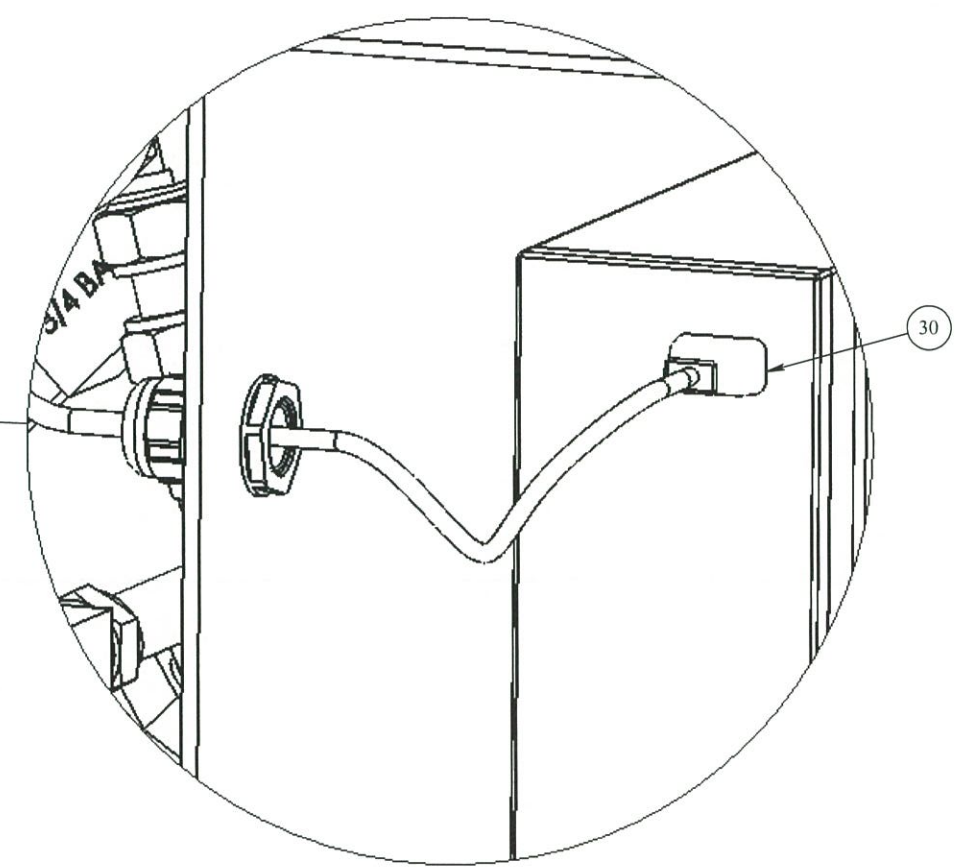
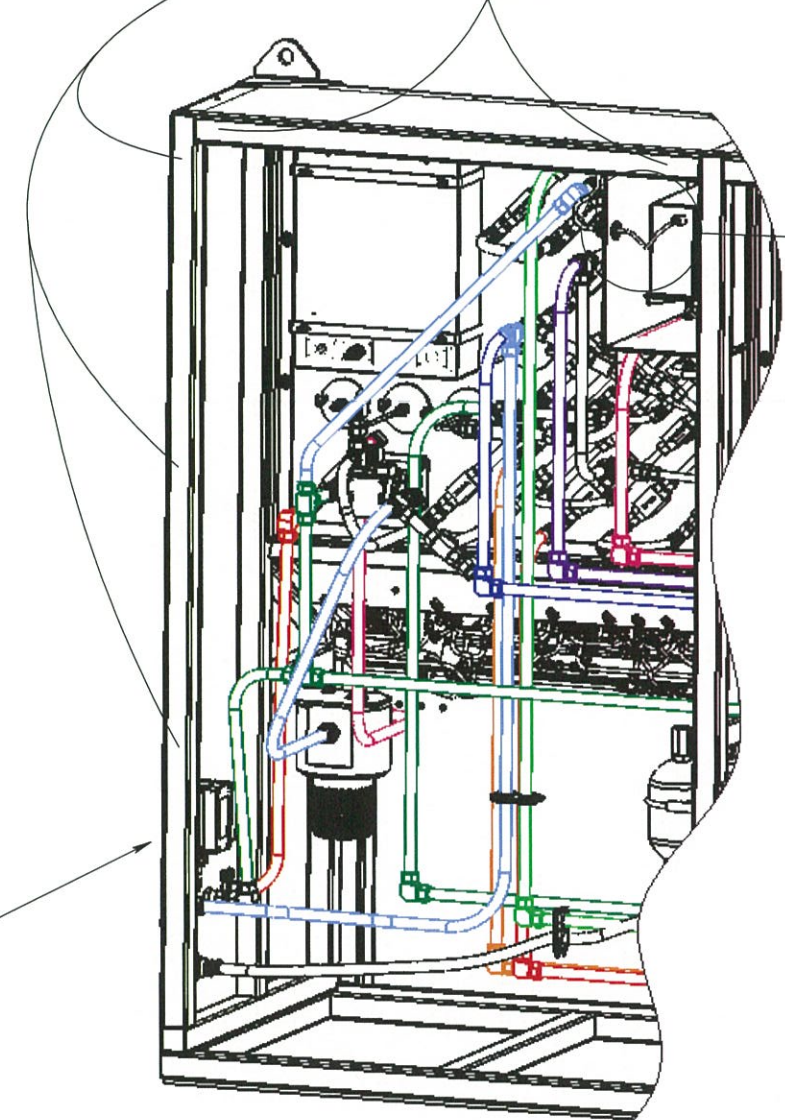
THE SUBSEA COMPANY		THE SUBSEA COMPANY INC	
SIZE	TITLE:	REV	
B	TEST BENCH ASSEMBLY, MK3	B1	
DWG. NO. TSC-01752		SHEET 4 OF 6	



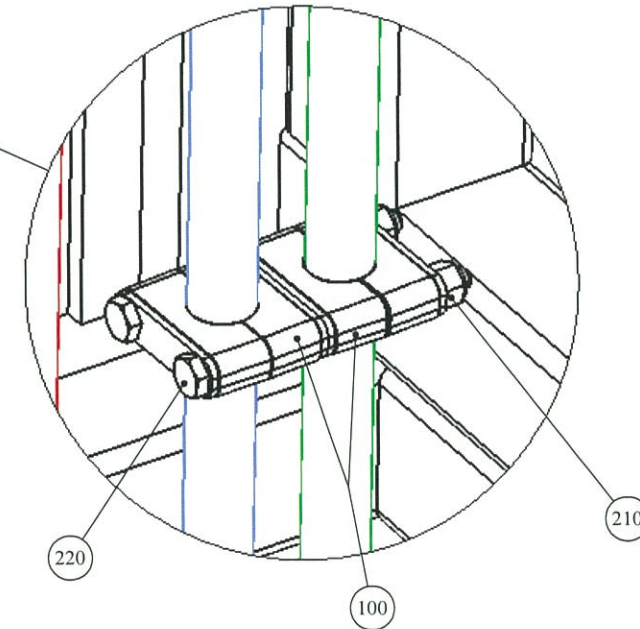
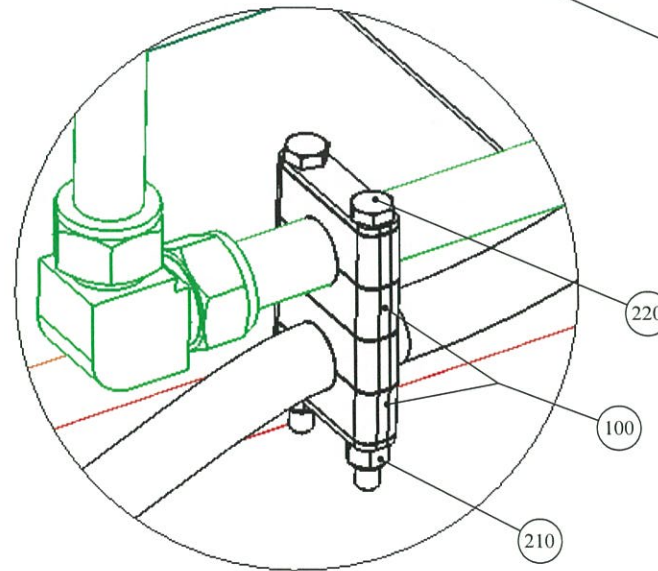
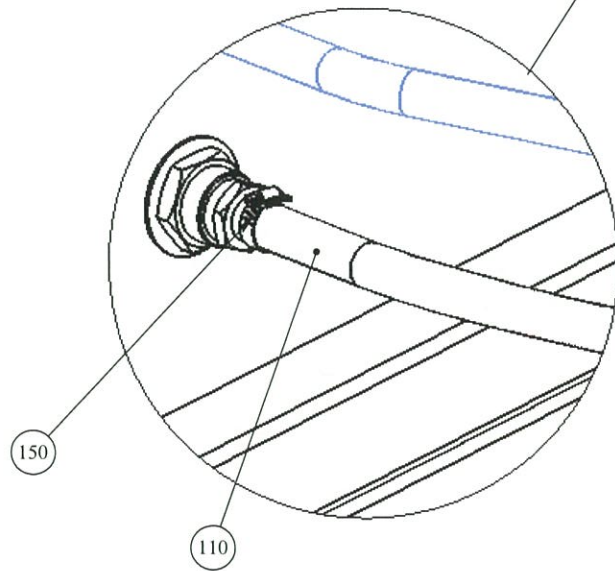
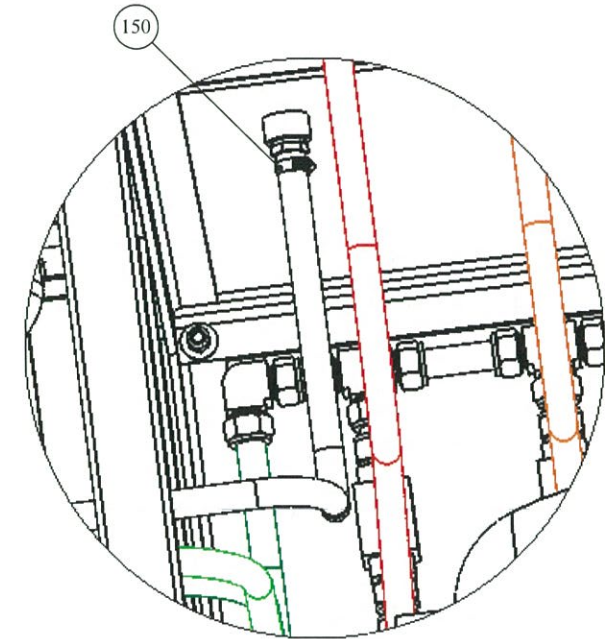
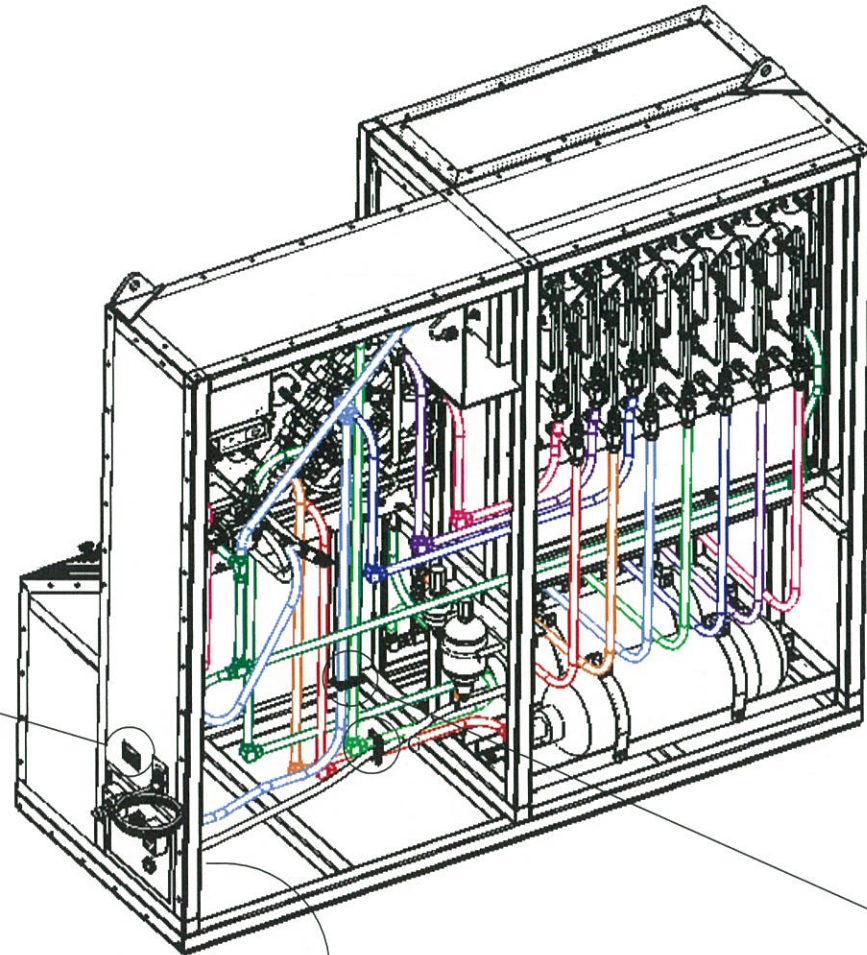
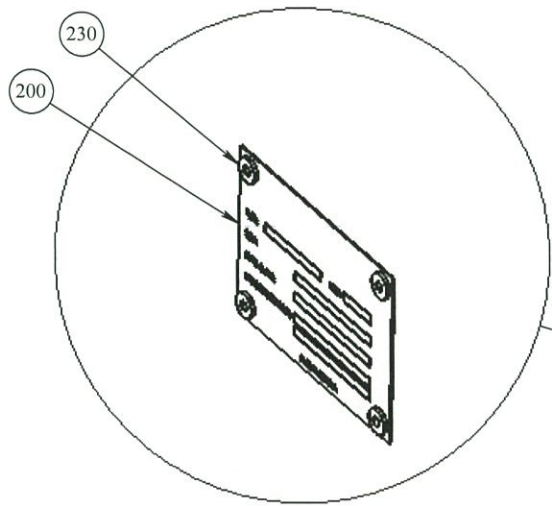
USE RED CRIMP
ON TERMINALS - 3 PLACES



USE SE-0549, CABLE TIES, TO ANCHOR
POWER CORD TO INSIDE OF FRAME
5 PLACES



PROPRIETARY AND CONFIDENTIAL: THE INFORMATION CONTAINED IN THIS DRAWING IS THE SOLE PROPERTY OF THE SUBSEA COMPANY INC. ANY REPRODUCTION IN PART OR AS A WHOLE WITHOUT THE WRITTEN PERMISSION OF THE SUBSEA COMPANY INC IS PROHIBITED. 3RD ANGLE PROJECTION: 	WORKMANSHIP STANDARD PER WI 751-001	NAME: [Signature] DATE: 4-27-16		THE SUBSEA COMPANY INC	SIZE: B	TITLE: TEST BENCH ASSEMBLY, MK3	REV B1
	UNLESS OTHERWISE SPECIFIED: ALL DIMENSIONS ARE IN INCHES	CHECKED: [Signature] Q.A.: AC MFG APPR.: [Signature]					
	INTERPRET GEOMETRIC TOLERANCING PER: ASME Y14.5	WEIGHT: 2783LBS.	DWG. NO. TSC-01752	SHEET 5 OF 6			

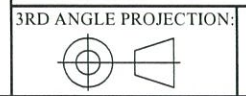


PROPRIETARY AND CONFIDENTIAL:
 THE INFORMATION CONTAINED IN THIS DRAWING IS THE SOLE PROPERTY OF THE SUBSEA COMPANY INC. ANY REPRODUCTION IN PART OR AS A WHOLE WITHOUT THE WRITTEN PERMISSION OF THE SUBSEA COMPANY INC IS PROHIBITED.

WORKMANSHIP STANDARD
 PER W1 751-001

UNLESS OTHERWISE SPECIFIED:
 ALL DIMENSIONS ARE IN INCHES

WEIGHT: 2783LBS.



INTERPRET GEOMETRIC
 TOLERANCING PER:
 ASME Y14.5

	NAME	DATE
DRAWN	Const	4-27-16
CHECKED	Guisey	4-28-16
Q.A.	AC	4-28-16
MFG APPR.	Const	4-28-16



SIZE	TITLE:	REV
B	TEST BENCH ASSEMBLY, MK3	B1

DWG. NO. TSC-01752 SHEET 6 OF 6