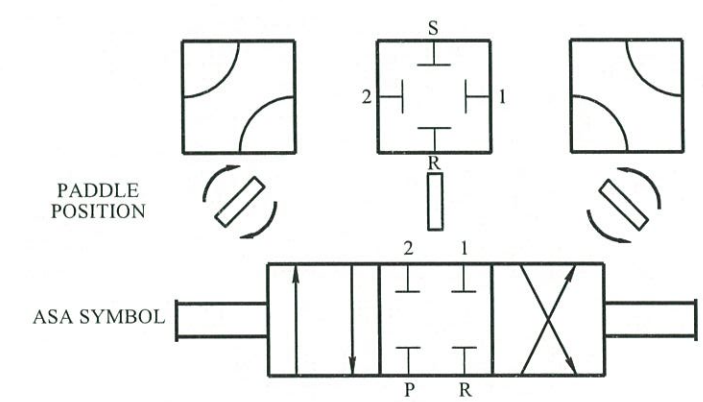
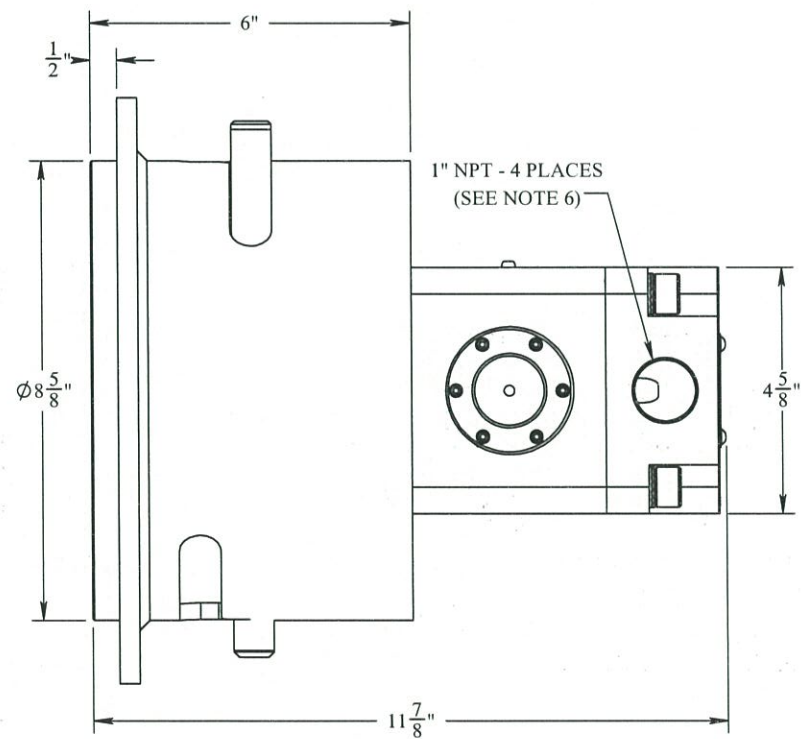
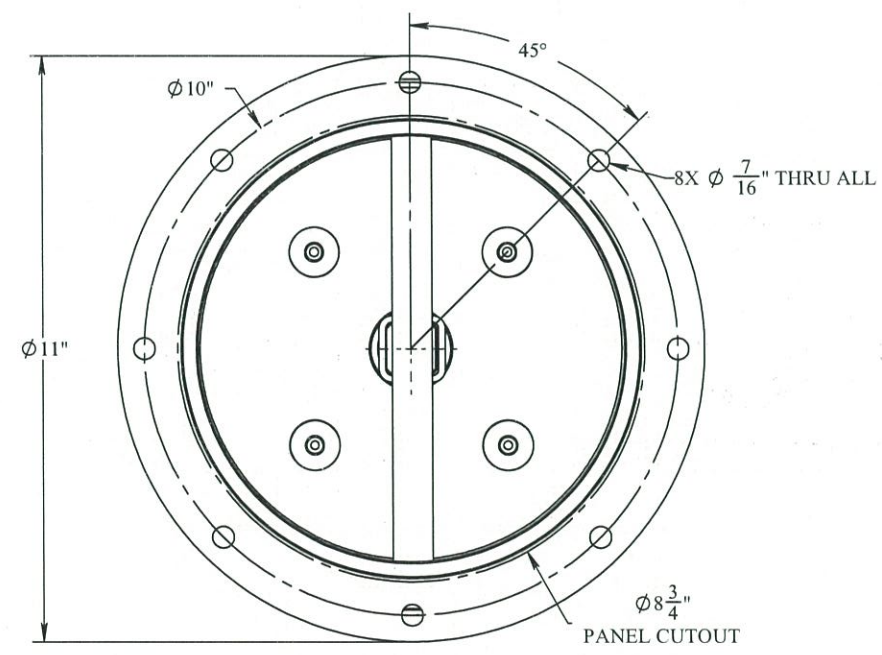
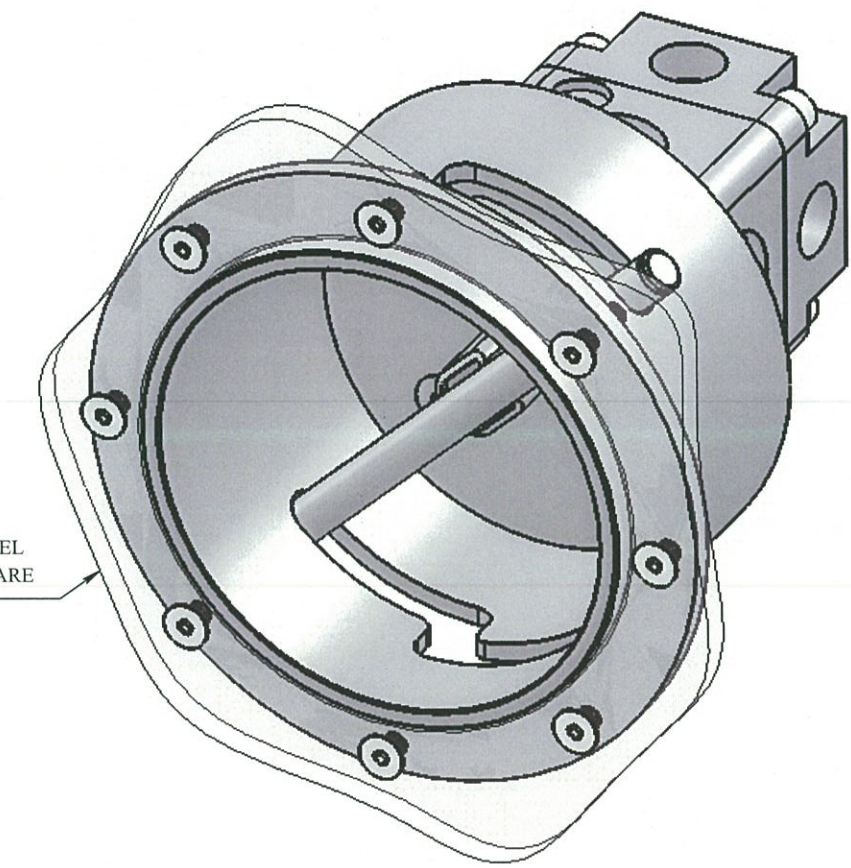
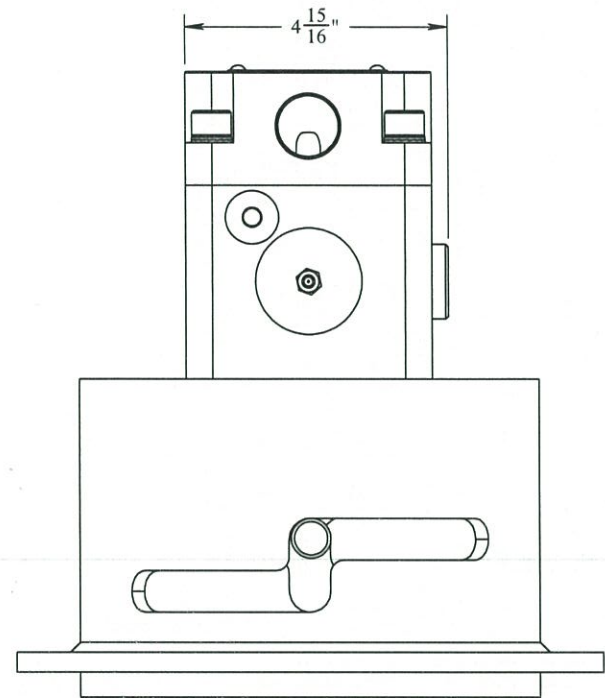


REVISIONS				
REV.	DESCRIPTION	ECO #	DATE	APPROVED
A1	RELEASE	2017-015	1/26/17	GNB



- NOTES:**
- 5,000 PSI WORKING PRESSURE
 - 1" NPT CONNECTIONS
 - 3-POSITION, 4 WAY SELECTOR VALVE
 - SUBSEA SERVICE AND PRESSURE COMPENSATION
 - 316 STAINLESS STEEL HOUSING WITH NBR SEALS
 - PORTS LABELED ON BACKSIDE OF VALVE
 - SUITABLE FOR WATER BASED FLUIDS OR OIL
 - CALCULATED $C_v = 3.2$
 - 2 DROPS PER MIN. ACCEPTABLE DRIP RATE WITH OIL
 - SUBSEA ROV BUCKET MOUNT, W / INTERLOCK "T" HANDLE

PROPRIETARY AND CONFIDENTIAL: THE INFORMATION CONTAINED IN THIS DRAWING IS THE SOLE PROPERTY OF THE SUBSEA COMPANY INC. ANY REPRODUCTION IN PART OR AS A WHOLE WITHOUT THE WRITTEN PERMISSION OF THE SUBSEA COMPANY INC IS PROHIBITED.	WORKMANSHIP STANDARD PER WI 751-001	<table border="1"> <tr><th>NAME</th><th>DATE</th></tr> <tr><td>COLE</td><td>1-27-17</td></tr> <tr><td>GREG</td><td>1-27-17</td></tr> <tr><td>REN</td><td>1-27-17</td></tr> </table>	NAME	DATE	COLE	1-27-17	GREG	1-27-17	REN	1-27-17	THE SUBSEA COMPANY INC
	NAME	DATE									
COLE	1-27-17										
GREG	1-27-17										
REN	1-27-17										
UNLESS OTHERWISE SPECIFIED: ALL DIMENSIONS ARE IN INCHES	SIZE B TITLE: VALVE/BUCKET ASSEMBLY, SELECTOR, CLOSED CENTER, 1" NPT	REV A1									
3RD ANGLE PROJECTION:	INTERPRET GEOMETRIC TOLERANCING PER: ASME Y14.5	DWG. NO. TSC-01968-GA	SHEET 1 OF 1								