



Innovating Tomorrow's Standards

High Pressure Swivels



Heavy Duty design and serviceability saves time & money.

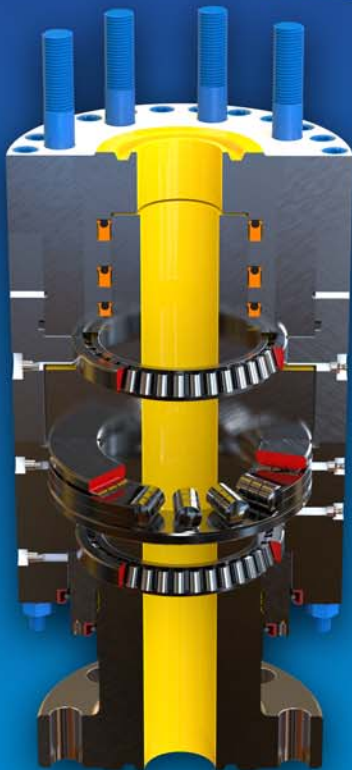
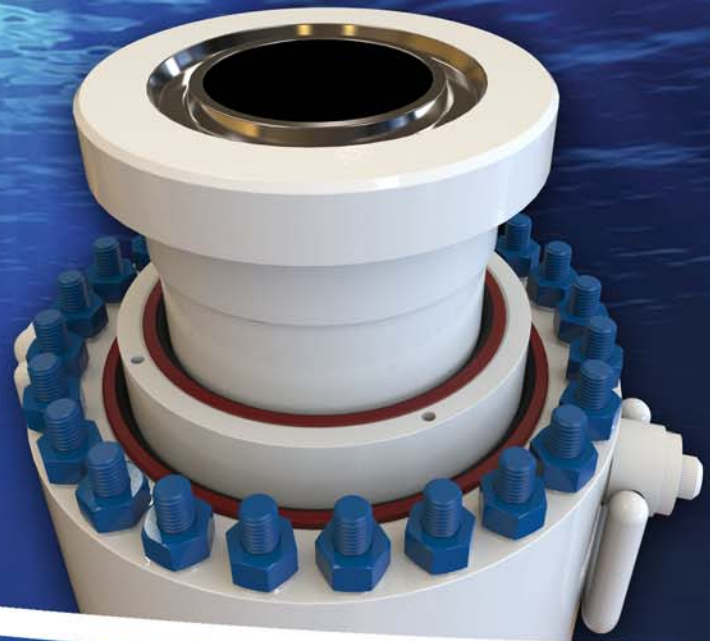
Superior Design

Low Torque 360 degree rotation under full system pressure, reliability under extreme offshore conditions and field serviceability were the drivers of our robust Heavy Duty High Pressure Swivel design.

Pressure pulsations, extreme axial and lateral loading caused by the swinging and flexing of high pressure drupe hoses will cause inferior swivels to fail creating critical system pressure loses and significant non-productive time events.

Key Features

- 3,000 to 15,000 PSI working pressures
- Low Torque under full pressure
- Hydraulic or Sour Mud Service
- Field serviceable and repairable
- Sealed lubrication ports
- Pressure & load tested 1.5 times MWP
- API standard connections
- Custom sizes, connections and media available upon request



Typical Applications

- Drilling Riser Auxiliary Lines
 - Hydraulic
 - Mud Boost
 - Choke & Kill
 - Managed Pressure Drilling
 - Dual Gradient Drilling

The Subsea Company swivel design utilizes heavy duty name brand roller bearings to handle the extreme axial and lateral loading typically found during offshore drilling operations. Using our High Pressure Swivels for all your under pressure swivel requirements and to position hoses for flange alignment during make up saves time and money.

Standard Product Selection Guide

Part Number	Pressure Rating	Description	Bore Size	Design Standard
TSC-01486	3,000	Swivel, 3K, Managed Pressure Drilling 2-1/16" API 17SS Flange with BX-152 Ring Groove	2-1/16"	API 6A,16A,16C, NACE MR0175
TSC-01478	3,000	Swivel, 3K, Managed Pressure Drilling 5-1/8" API 17SS Flange with BX-169 Ring Groove	5-1/8"	API 6A,16A,16C, NACE MR0175
TSC-00641	5,000	Swivel, 5K, Hydraulic 2-1/16" API 17SS Flange with BX-152 Ring Groove	2-1/16"	API 6A,16A,16D,17D
TSC-01708	5,000	Swivel, 5K, Hydraulic 2-9/16" API Hubs with BX-153 Ring Groove	2-9/16"	API 6A,16A,16D,17D
TSC-00640	5,000	Swivel, 5K, Mud Boost 3-1/8" API 17SS Flange with BX-154 Ring Groove	3-1/8"	API 6A,16A,16C,17D
TSC-01587	5,000	Swivel, 5K, Managed Pressure Drilling 7-1/16" API Hubs with BX-156 Ring Groove	5-1/8"	API 6A,16A,16C, NACE MR0175
TSC-01685	7,500	Swivel, 7.5K, Mud Boost 4-1/16" API 17SS 10K Flange with BX-155 Ring Groove	4-1/16"	API 6A,16A,16C, 17D
TSC-00468	15,000	Swivel, 15K, Choke & Kill 3-1/16" API 6A Flange with BX-154 Ring Groove	2-7/8"	API 6A,16A,16C, NACE MR0175
TSC-01707	15,000	Swivel, 15K, Choke & Kill, Mud Boost 3-1/16" API Hubs with BX-154 Ring Groove	3"	API 6A,16A,16C, NACE MR0175

Custom Products

(AR) As Required - specific application requirements

Part Number	Pressure Rating	Description	Bore Size	Design Standard
TBD	AR	Connections, materials and specifications as required	AR	AR





Innovating Tomorrow's Standards

Raising the bar with innovative solutions worth sharing, The Subsea Company has significant experience in developing equipment to minimize risk, solve downtime issues and improve subsea operations and safety.

Our mission is to develop, manufacture and provide reliable market driven subsea products, equipment, and systems used in the offshore drilling and production industry. We strive to help our customers become successful by delivering customized solutions, when they need it the most.