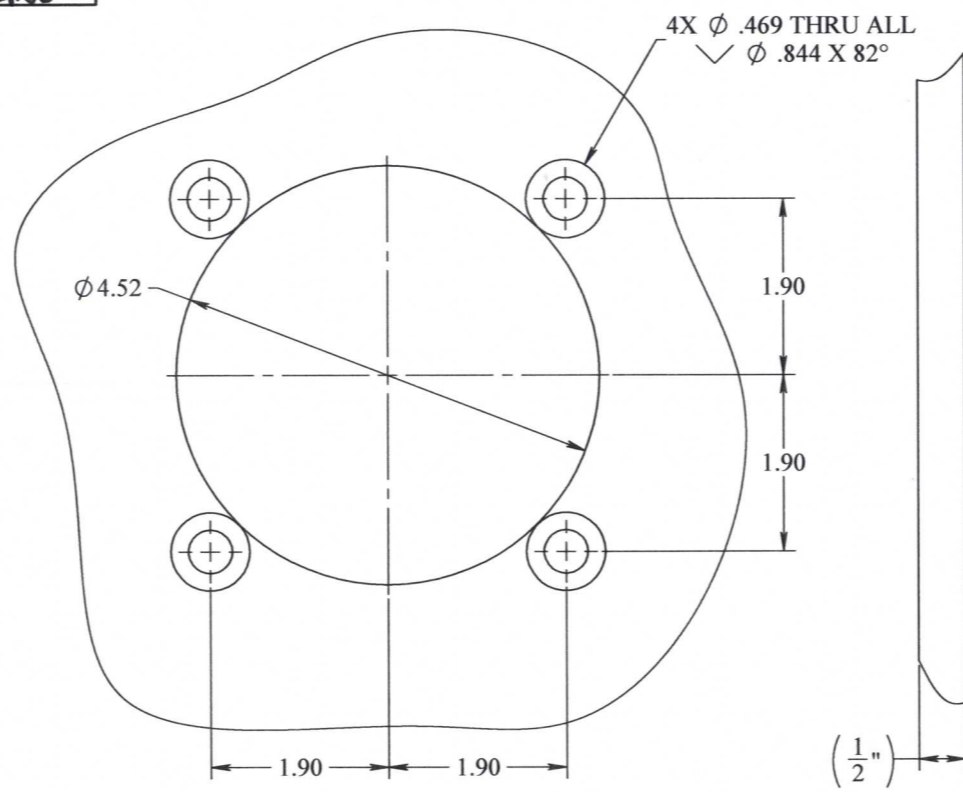
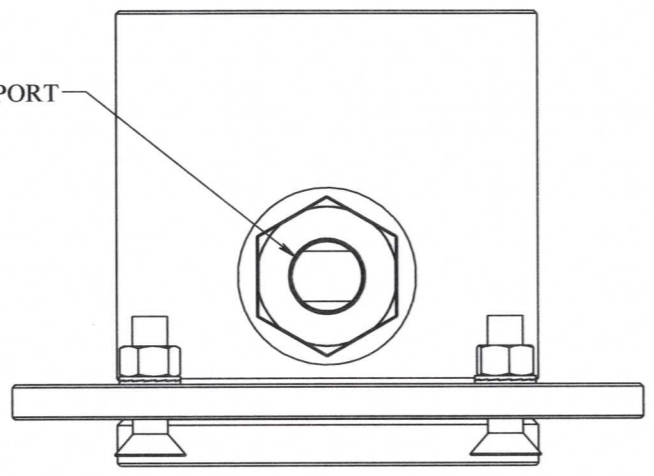


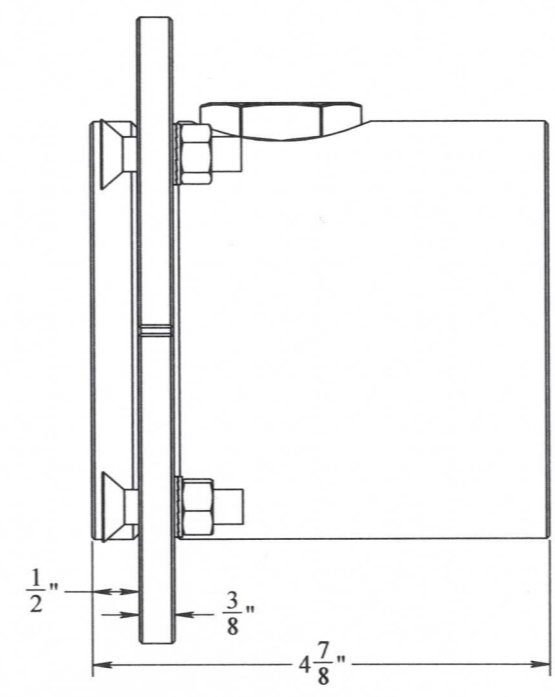
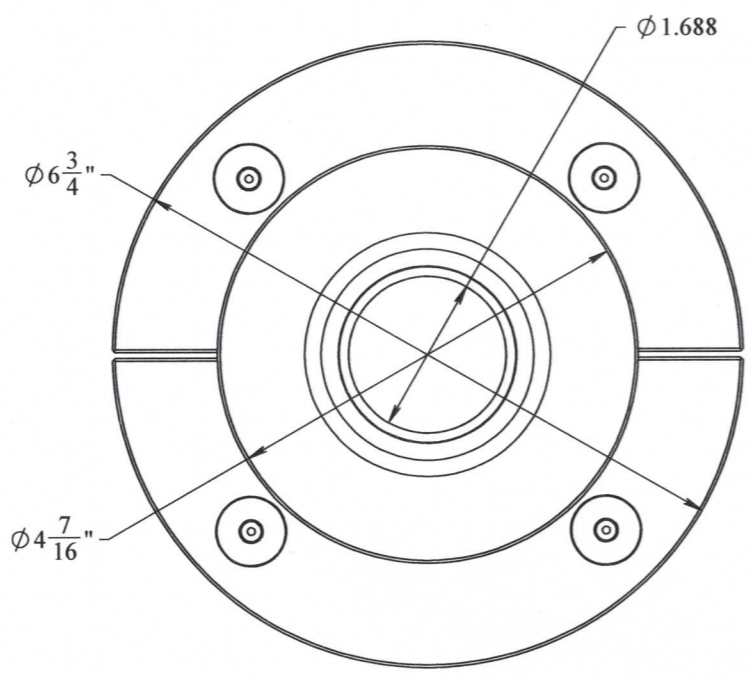
8 7 6 5 4 3 2 1

REVISIONS				
REV.	DESCRIPTION	ECO #	DATE	APPROVED
A1	RELEASE	2013-362	9/10/2013	CNB

1/2" SAE PORT



PANEL CUTOUT



- NOTES:
- MATERIAL OF CONSTRUCTION:
    - RECEPTACLE IS NITRONIC 60
    - COLLET RING IS 316 STAINLESS STEEL
    - HARDWARE IS 316 STAINLESS STEEL
    - DESIGNED TO API 17H TYPE B STANDARDS
  - 1/2" SAE PORT RATED AT 5K PSI.
  - WEIGHT: 20 LBS.
  - DESIGNED FOR HIGH FLOW

**PROPRIETARY AND CONFIDENTIAL:**  
 THE INFORMATION CONTAINED IN THIS DRAWING IS THE SOLE PROPERTY OF THE SUBSEA COMPANY INC. ANY REPRODUCTION IN PART OR AS A WHOLE WITHOUT THE WRITTEN PERMISSION OF THE SUBSEA COMPANY INC IS PROHIBITED.

3RD ANGLE PROJECTION:

INTERPRET GEOMETRIC TOLERANCING PER: ASME Y14.5

WORKMANSHIP STANDARD PER WI 751-001

UNLESS OTHERWISE SPECIFIED: ALL DIMENSIONS ARE IN INCHES

WEIGHT: 20 lbs.

NAME	DATE
DRAWN: CREG	9-10-13
CHECKED: AC	9-10-13
Q.A.:	
MFG APPR.:	

SCALE: 1:2

DO NOT SCALE DRAWING

**SUBSEA COMPANY** THE SUBSEA COMPANY INC

SIZE: **B** TITLE: RECEPTACLE, HIGH FLOW ASSEMBLY, FEMALE, 1/2" SAE PORT

DWG. NO. TSC-01233-GA

REV **A1** SHEET 1 OF 1

8 7 6 5 4 3 2 1